

CD351 polyclonal antibody

Catalog: NCP0301P

Host: Rabbit

Reactivity: Human, Mouse

BackGround:

Functions as a receptor for the Fc fragment of IgA and IgM. Binds IgA and IgM with high affinity and mediates their endocytosis. May function in the immune response to microbes mediated by IgA and IgM.

Product:

Rabbit IgG, 1mg/ml in PBS with 0.02% sodium azide, 50% glycerol, pH7.2.

Molecular Weight:

~60 kDa

Swiss-Prot:

Q8WWV6

Purification&Purity:

The antibody was affinity-purified from rabbit antiserum by affinity-chromatography using epitope-specific immunogen and the purity is > 95% (by SDS-PAGE).

Applications:

WB: 1:5000~1:10000

IF 1:50~1:200

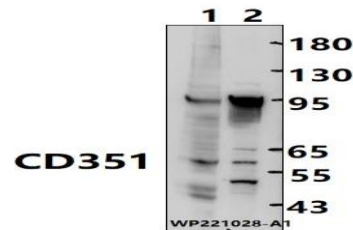
Storage&Stability:

Store at 4 °C short term. Aliquot and store at -20 °C long term. Avoid freeze-thaw cycles.

Specificity:

CD351 polyclonal antibody detects endogenous levels of CD351 protein.

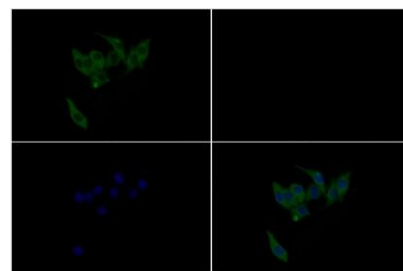
DATA:



Western blot (WB) analysis of CD351 polyclonal antibody at 1:5000 dilution

Lane1:CT-26 whole cell lysate(25ug)

Lane2:MCF-7 cell membrane lysate(30ug)



Immunofluorescence analysis of MCF-7 cells using CD351 pAb at dilution of 1:200.

Note:

For research use only, not for use in diagnostic procedure.

Bioworld Technology, Inc.

Add: 1660 South Highway 100, Suite 500 St. Louis Park, MN 55416, USA.

Email: info@bioworld.com

Tel: 6123263284

Fax: 6122933841

Bioworld technology, co. Ltd.

Add: No 9, weidi road Qixia District Nanjing, 210046, P. R. China.

Email: info@biogot.com

Tel: 0086-025-68037686

Fax: 0086-025-68035151