

CD161 polyclonal antibody

Catalog: NCP0285P

Host: Rabbit

Reactivity: Rat, Mouse, Human

Background:

Plays an inhibitory role on natural killer (NK) cells cytotoxicity. Activation results in specific acid sphingomyelinase/SMPD1 stimulation with subsequent marked elevation of intracellular ceramide. Activation also leads to AKT1/PKB and RPS6KA1/RSK1 kinases stimulation as well as markedly enhanced T-cell proliferation induced by anti-CD3. Acts as a lectin that binds to the terminal carbohydrate Gal- α (1,3)Gal epitope as well as to the N-acetyllactosamine epitope. Binds also to CLEC2D/LLT1 as a ligand and inhibits NK cell-mediated cytotoxicity as well as interferon-gamma secretion in target cells.

Product:

Rabbit IgG, 1mg/ml in PBS with 0.02% sodium azide, 50% glycerol, pH7.2.

Molecular Weight:

~ 43 kDa

Swiss-Prot:

Q12918

Purification&Purity:

The antibody was affinity-purified from rabbit antiserum by affinity-chromatography using epitope-specific immunogen and the purity is > 95% (by SDS-PAGE).

Applications:

WB: 1:5000~1:10000

IF 1:50~1:200

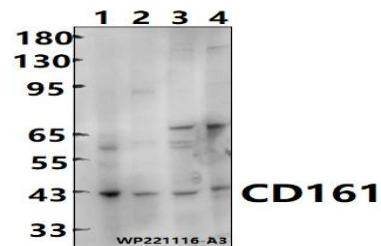
Storage&Stability:

Store at 4 °C short term. Aliquot and store at -20 °C long term. Avoid freeze-thaw cycles.

Specificity:

CD161 polyclonal antibody detects endogenous levels of CD161 protein.

DATA:



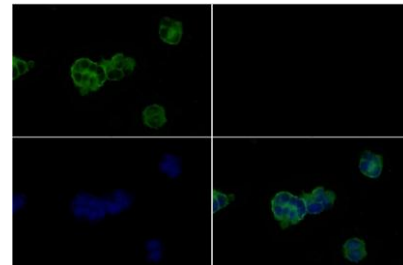
Western blot (WB) analysis of CD161 polyclonal antibody at 1:5000 dilution

Lane1:HEK293T cell membrane lysate(30ug)

Lane2:MCF-7 cell membrane lysate(30ug)

Lane3:CT-26 whole cell lysate(30ug)

Lane4:PC12 whole cell lysate(30ug)



Immunofluorescence analysis of HEK293T cells using CD161 pAb at dilution of 1:200.

Note:

For research use only, not for use in diagnostic procedure.

Bioworld Technology, Inc.

Add: 1660 South Highway 100, Suite 500 St. Louis Park, MN 55416, USA.

Email: info@bioworld.com

Tel: 6123263284

Fax: 6122933841

Bioworld technology, co. Ltd.

Add: No 9, weidi road Qixia District Nanjing, 210046, P. R. China.

Email: info@biogot.com

Tel: 0086-025-68037686

Fax: 0086-025-68035151