

CD158e polyclonal antibody

Catalog: NCP0280P

Host: Rabbit

Reactivity: Human,Rat

BackGround:

Receptor on natural killer (NK) cells for HLA Bw4 allele. Inhibits the activity of NK cells thus preventing cell lysis.

Product:

Rabbit IgG, 1mg/ml in PBS with 0.02% sodium azide, 50% glycerol, pH7.2.

Molecular Weight:

~ 49 kDa

Swiss-Prot:

P43629

Purification&Purity:

The antibody was affinity-purified from rabbit antiserum by affinity-chromatography using epitope-specific immunogen and the purity is > 95% (by SDS-PAGE).

Applications:

WB: 1:2000~1:5000

IF 1:50~1:200

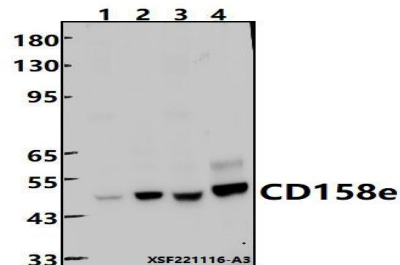
Storage&Stability:

Store at 4 °C short term. Aliquot and store at -20 °C long term. Avoid freeze-thaw cycles.

Specificity:

CD158e polyclonal antibody detects endogenous levels of CD158e protein.

DATA:



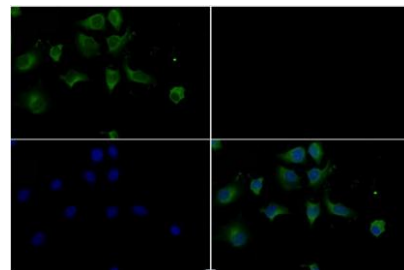
Western blot (WB) analysis of CD158e polyclonal antibody at 1:2000 dilution

Lane1:A549 whole cell lysate(30ug)

Lane2:L02 cell membrane lysate(24ug)

Lane3:HepG2 whole cell lysate(30ug)

Lane4:PMVEC whole cell lysate(30ug)



Immunofluorescence analysis of A549 cells using CD158e pAb at dilution of 1:200.

Note:

For research use only, not for use in diagnostic procedure.

Bioworld Technology, Inc.

Add: 1660 South Highway 100, Suite 500 St. Louis Park, MN 55416, USA.

Email: info@bioworld.com

Tel: 6123263284

Fax: 6122933841

Bioworld technology, co. Ltd.

Add: No 9, weidi road Qixia District Nanjing, 210046, P. R. China.

Email: info@biogot.com

Tel: 0086-025-68037686

Fax: 0086-025-68035151