

CD118 Recombinant Protein

Catalog: NCP0254

Host: E.coli

Tag: His-tag

BackGround:

IL-6 activates intracellular signaling through binding a receptor consisting of an ligand-binding protein (IL-6R) and a second protein. IL-6 first binds to IL-6R which subsequently associates with a gp130 dimer. The active signaling complex consists of at minimum IL-6, IL-6R and a dimer of two gp130 proteins that are linked by a disulfide bond. A soluble form of IL-6R is generated by proteolytic cleavage of the membrane-bound precursor and can function as an agonistic molecule that can actively participate in cell-to-cell signaling. The second subunit of the IL-6 complex, gp130, also functions as a component of several additional receptor complexes including leukemia inhibitory factor (LIF), oncostatin M (OSM), ciliary neurotrophic factor (CNTF) and IL-11. LIF binds to the LIF receptor (LIFR) with low affinity and to a complex of the LIF receptor and gp130 with high affinity while OSM appears to bind to gp130 with low affinity and to a complex of gp130 and the LIF receptor with high affinity.

Product:

PBS, 4M Urea, PH7.4

Molecular Weight:

~87kDa

Swiss-Prot:

P42702

Purification&Purity:

Transferred into competent cells and the supernatant was purified by NI column affinity chromatography and the purity is > 85% (by SDS-PAGE).

Restriction Sites:

NdeI-XhoI

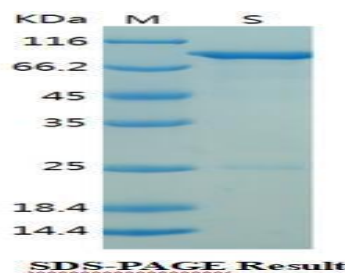
Storage&Stability:

Store at 4 °C short term. Aliquot and store at -20 °C long term. Avoid freeze-thaw cycles.

Expression Vector:

pet-22b(+)

DATA:



Note:

For research use only, not for use in diagnostic procedure.

Bioworld Technology, Inc.

Add: 1660 South Highway 100, Suite 500 St. Louis Park, MN 55416, USA.

Email: info@bioworld.com

Tel: 6123263284

Fax: 6122933841

Bioworld technology, co. Ltd.

Add: No 9, weidi road Qixia District Nanjing, 210046, P. R. China.

Email: info@biogot.com

Tel: 0086-025-68037686

Fax: 0086-025-68035151