

CD116/CSF2RA polyclonal antibody

Catalog: NCP0252P

Host: Rabbit

Reactivity: Human

BackGround:

Low affinity receptor for granulocyte-macrophage colony-stimulating factor. Transduces a signal that results in the proliferation, differentiation, and functional activation of hematopoietic cells.

Product:

Rabbit IgG, 1mg/ml in PBS with 0.02% sodium azide, 50% glycerol, pH7.2.

Molecular Weight:

~ 46 kDa

Swiss-Prot:

P15509

Purification&Purity:

The antibody was affinity-purified from rabbit antiserum by affinity-chromatography using epitope-specific immunogen and the purity is > 95% (by SDS-PAGE).

Applications:

WB: 1:2000~1:5000

IF 1:50~1:200

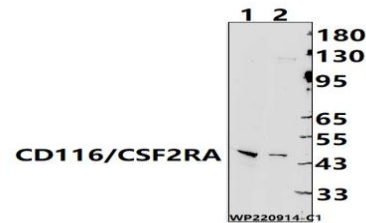
Storage&Stability:

Store at 4 °C short term. Aliquot and store at -20 °C long term. Avoid freeze-thaw cycles.

Specificity:

CD116/CSF2RA polyclonal antibody detects endogenous levels of CD116/CSF2RA protein.

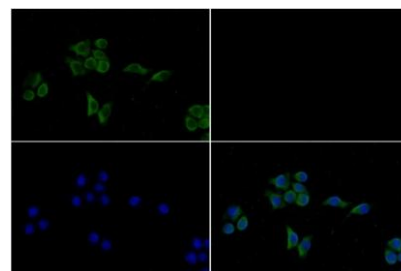
DATA:



Western blot (WB) analysis of CD116/CSF2RA polyclonal antibody at 1:2000 dilution

Lane1:MCF-7 cell membrane lysate(25ug)

Lane2:LO2 cell membrane lysate(25ug)



Immunofluorescence analysis of LO2 cells using CD116/CSF2RA pAb at dilution of 1:200.

Note:

For research use only, not for use in diagnostic procedure.

Bioworld Technology, Inc.

Add: 1660 South Highway 100, Suite 500 St. Louis Park, MN 55416, USA.

Email: info@bioworld.com

Tel: 6123263284

Fax: 6122933841

Bioworld technology, co. Ltd.

Add: No 9, weidi road Qixia District Nanjing, 210046, P. R. China.

Email: info@biogot.com

Tel: 0086-025-68037686

Fax: 0086-025-68035151