

CD48 polyclonal antibody

Catalog: NCP0213P

Host: Rabbit

Reactivity: Human, Rat

BackGround:

CD48 is a glycosylphosphatidylinositol (GPI) -anchored membrane protein of the signaling lymphocyte activation molecule (SLAM) family, also known as SLAMF2 and BLAST-1. It is constitutively expressed on most hematopoietic cells (not on neutrophils and a subset of long-term hematopoietic stem cells in mice) and can be upregulated under certain conditions like infection. Interaction with its low affinity ligand CD2 promotes adhesion and TCR signaling. Interaction with the high affinity ligand CD244 (2B4) regulates natural killer (NK) and CD8 T cell activation and cytolytic function.

Product:

Rabbit IgG, 1mg/ml in PBS with 0.02% sodium azide, 50% glycerol, pH7.2.

Molecular Weight:

~ 48 kDa

Swiss-Prot:

P09326

Purification&Purity:

The antibody was affinity-purified from rabbit antiserum by affinity-chromatography using epitope-specific immunogen and the purity is > 95% (by SDS-PAGE).

Applications:

WB: 1:1000~1:2000

IF 1:50~1:200

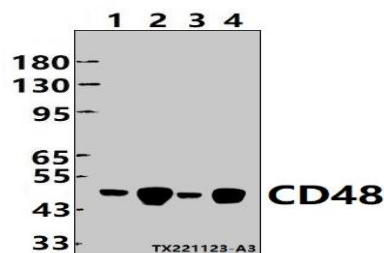
Storage&Stability:

Store at 4 °C short term. Aliquot and store at -20 °C long term. Avoid freeze-thaw cycles.

Specificity:

CD48 polyclonal antibody detects endogenous levels of CD48 protein.

DATA:



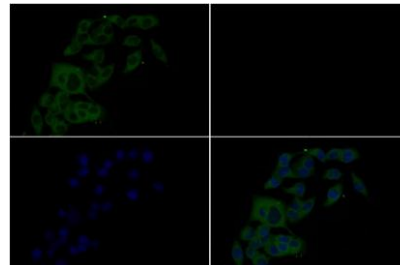
Western blot (WB) analysis of CD48 polyclonal antibody at 1:1000 dilution

Lane1: LOVO whole cell lysate(30ug)

Lane2: L02 cell membrane lysate(30ug)

Lane3: MCF-7 whole cell lysate(30ug)

Lane4: PMVEC whole cell lysate(20ug)



Immunofluorescence analysis of MCF-7 cells using CD48 pAb at dilution of 1:200.

Note:

For research use only, not for use in diagnostic procedure.

Bioworld Technology, Inc.

Add: 1660 South Highway 100, Suite 500 St. Louis Park, MN 55416, USA.

Email: info@bioworld.com

Tel: 6123263284

Fax: 6122933841

Bioworld technology, co. Ltd.

Add: No 9, weidi road Qixia District Nanjing, 210046, P. R. China.

Email: info@biogot.com

Tel: 0086-025-68037686

Fax: 0086-025-68035151