

CD27 polyclonal antibody

Catalog: NCP0196P

Host: Rabbit

Reactivity: Human,Rat,Mouse

BackGround:

CD27 (TNFRSF7) is a transmembrane protein of the TNF receptor superfamily (TNFRSF). It is mainly expressed on lymphoid cells (also on early hematopoietic precursor cells in mice). CD27 is considered a phenotypic marker for memory B cells and is also used to identify B regulatory (Breg) cells. It is constitutively expressed on naïve CD4 and CD8 T cells and its expression is further upregulated upon T cell activation. CD27 is one of the two most important co-stimulatory receptors for T cell priming (the other one is CD28). While CD28 co-stimulatory signal mainly triggers cell proliferation, CD27 co-stimulatory signal primarily promotes cell survival and differentiation. Upon binding to its ligand CD70, CD27 activates the NF- κ B and JNK signaling pathways through TNFR associated factors (TRAFs), the adaptor molecules that are associated with CD27 cytoplasmic tail domain. Upon activation CD27 is shed from cell surface and soluble CD27 is used as a marker of T cell activation.

Product:

Rabbit IgG, 1mg/ml in PBS with 0.02% sodium azide, 50% glycerol, pH7.2.

Molecular Weight:

~ 65 kDa

Swiss-Prot:

P26842

Purification&Purity:

The antibody was affinity-purified from rabbit antiserum by affinity-chromatography using epitope-specific immunogen and the purity is > 95% (by SDS-PAGE).

Applications:

WB: 1:1000~1:2000

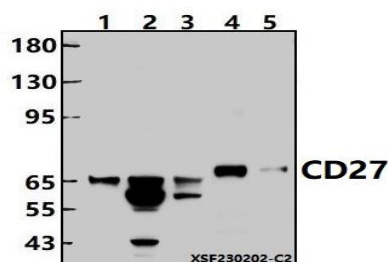
Storage&Stability:

Store at 4 °C short term. Aliquot and store at -20 °C long term. Avoid freeze-thaw cycles.

Specificity:

CD27 polyclonal antibody detects endogenous levels of CD27 protein.

DATA:



Western blot (WB) analysis of CD27 polyclonal antibody at 1:1000 dilution

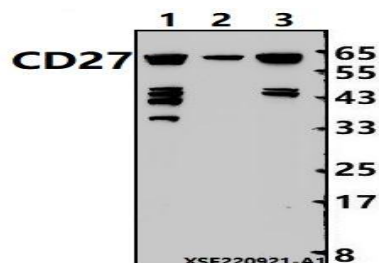
Lane1:EC9706 cell membrane lysate(24ug)

Lane2:A549 whole cell lysate(30ug)

Lane3:SGC7901 whole cell lysate(30ug)

Lane4:The Heart tissue lysate of Mouse(30ug)

Lane5:The Kidney tissue lysate of Rat(30ug)



Western blot (WB) analysis of CD27 polyclonal antibody at 1:1000 dilution

Lane1:A549 cell membrane lysate(24ug)

Lane2:EC9706 cell membrane lysate(24ug)

Lane3:SGC7901 cell membrane lysate(24ug)

Note:

For research use only, not for use in diagnostic procedure.

Bioworld Technology, Inc.

Add: 1660 South Highway 100, Suite 500 St. Louis Park, MN 55416,USA.

Email: info@bioworld.com

Tel: 6123263284

Fax: 6122933841

Bioworld technology, co. Ltd.

Add: No 9, weidi road Qixia District Nanjing, 210046, P. R. China.

Email: info@biogot.com

Tel: 0086-025-68037686

Fax: 0086-025-68035151



PRODUCT DATA SHEET

Bioworld Technology, Inc.

Bioworld Technology, Inc.

Add: 1660 South Highway 100, Suite 500 St. Louis Park,
MN 55416, USA.

Email: info@bioworld.com

Tel: 6123263284

Fax: 6122933841

Bioworld technology, co. Ltd.

Add: No 9, weidi road Qixia District Nanjing, 210046,
P. R. China.

Email: info@biogot.com

Tel: 0086-025-68037686

Fax: 0086-025-68035151