

CD1C polyclonal antibody

Catalog: NCP0187P

Host: Rabbit

Reactivity: Human,Rat

BackGround:

Antigen-presenting protein that binds self and non-self lipid and glycolipid antigens and presents them to T-cell receptors on natural killer T-cells.

Product:

Rabbit IgG, 1mg/ml in PBS with 0.02% sodium azide, 50% glycerol, pH7.2.

Molecular Weight:

~ 36 kDa

Swiss-Prot:

P29017

Purification&Purity:

The antibody was affinity-purified from rabbit antiserum by affinity-chromatography using epitope-specific immunogen and the purity is > 95% (by SDS-PAGE).

Applications:

WB: 1:1000~1:2000

IP 1:50 - 1:200

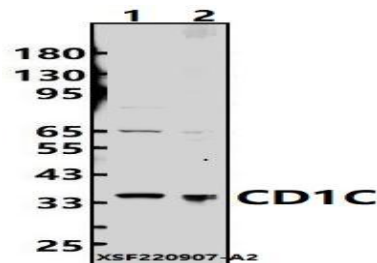
Storage&Stability:

Store at 4 °C short term. Aliquot and store at -20 °C long term. Avoid freeze-thaw cycles.

Specificity:

CD1C polyclonal antibody detects endogenous levels of CD1C protein.

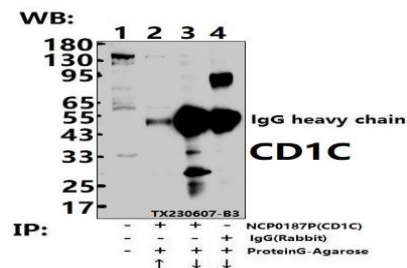
DATA:



Western blot (WB) analysis of CD1C polyclonal antibody at 1:1000 dilution

Lane1:MCF-7 cell membrane lysate(24ug)

Lane2:C6 cell membrane lysate(24ug)



Immunoprecipitation of C6 cell membrane lysates using CD1C pAb

(Sepharose Bead Conjugate)#BD0048 (lane 2 and lane 3) and Nonspecific IgG Control (Sepharose Bead Conjugate)#BD0048 (lane 4) .Lane

1 is 30% input. The western blot was probed using CD1C pAb

#NCP0187P.

Note:

For research use only, not for use in diagnostic procedure.

Bioworld Technology, Inc.

Add: 1660 South Highway 100, Suite 500 St. Louis Park, MN 55416, USA.

Email: info@bioworld.com

Tel: 6123263284

Fax: 6122933841

Bioworld technology, co. Ltd.

Add: No 9, weidi road Qixia District Nanjing, 210046, P. R. China.

Email: info@biogot.com

Tel: 0086-025-68037686

Fax: 0086-025-68035151