

## CD180 polyclonal antibody

Catalog: NCP0184P

Host: Rabbit

Reactivity: Human

### BackGround:

May cooperate with MD-1 and TLR4 to mediate the innate immune response to bacterial lipopolysaccharide (LPS) in B-cells. Leads to NF-kappa-B activation. Also involved in the life/death decision of B-cells (By similarity).

By similarity

### Product:

Rabbit IgG, 1mg/ml in PBS with 0.02% sodium azide, 50% glycerol, pH7.2.

### Molecular Weight:

~90 kDa

### Swiss-Prot:

Q99467

### Purification&Purity:

The antibody was affinity-purified from rabbit antiserum by affinity-chromatography using epitope-specific immunogen and the purity is > 95% (by SDS-PAGE).

### Applications:

WB: 1:1000~1:2000

IF 1:100 - 1:500

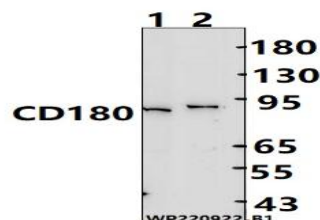
### Storage&Stability:

Store at 4 °C short term. Aliquot and store at -20 °C long term. Avoid freeze-thaw cycles.

### Specificity:

CD180 polyclonal antibody detects endogenous levels of CD180 protein.

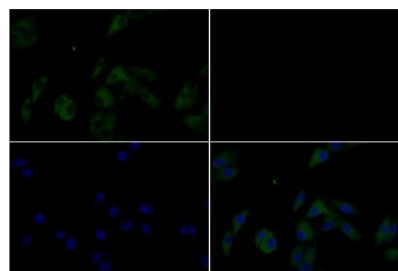
### DATA:



Western blot (WB) analysis of CD180 polyclonal antibody at 1:1000 dilution

Lane1:A549 cell membrane lysate(25ug)

Lane2:EC9706 cell membrane lysate(25ug)



Immunofluores-

cence analysis of MG63 cells using CD180 pAb at dilution of 1:200 (40 x lens).

### Note:

For research use only, not for use in diagnostic procedure.

### Bioworld Technology, Inc.

Add: 1660 South Highway 100, Suite 500 St. Louis Park, MN 55416, USA.

Email: [info@bioworld.com](mailto:info@bioworld.com)

Tel: 6123263284

Fax: 6122933841

### Bioworld technology, co. Ltd.

Add: No 9, weidi road Qixia District Nanjing, 210046, P. R. China.

Email: [info@biogot.com](mailto:info@biogot.com)

Tel: 0086-025-68037686

Fax: 0086-025-68035151