

## Japanese encephalitis virus E protein ectodomain (JEV-E)

Catalog: NCP0143

Tag: His-tag

Source: E. coli Expression

### BackGround:

Japanese encephalitis virus (JEV) is the most important cause of epidemic encephalitis worldwide, with an estimated 35,000 to 50,000 cases and 10,000 deaths annually. The virus is a member of the JE serogroup of the genus Flavivirus, family Flaviviridae, and is transmitted between vertebrate hosts by mosquitoes, principally by *Culex tritaeniorhynchus*. Other important members of the same serogroup of flaviviruses include West Nile virus (WNV), which has recently spread to cause outbreaks of encephalitis in North America, St. Louis encephalitis virus (SLEV), Kunjin virus (KUNV), and Murray Valley encephalitis virus (MVEV). Like other flaviviruses, JEV consists of a small (50 nm) glycoprotein-containing lipid envelope surrounding a nucleocapsid which encloses one molecule of single-stranded positive-sense RNA. This 11-kb molecule comprises 5- and 3-untranslated regions (UTRs), between which lie a single open reading frame carrying genes for three structural proteins (capsid [C], premembrane [PrM], and envelope [E]) and seven non-structural (NS) proteins

### Product:

Inclusion body; 0.5mol Urea, PH=8

### Molecular Weight:

309bp; 11kDa

### Entrez-Gene/ Swiss-Prot:

EF571853.1

### Purification&Purity:

Transferred into competent cells and the supernatant was purified by NI column affinity chromatography and the purity is > 85% (by SDS-PAGE).

### Applications:

Reseach

### Storage&Stability:

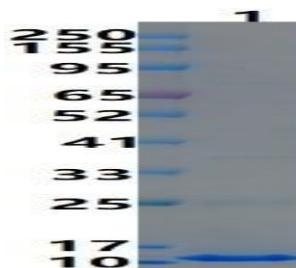
Store at 4 °C short term. Aliquot and store at -20 °C long term. Avoid freeze-thaw cycles.

### Information:

Carrier:pET30a-JEV-E-His(C-term)

Virus:Japanese encephalitis virus strain Nakayama

### DATA:



Japanese encephalitis virus E protein ectodomain, His Tag on SDS-PAGE under reducing (R) condition. The gel was stained overnight with Coomassie Blue. The purity of the protein is greater than 85%.

### Note:

For research use only, not for use in diagnostic procedure.

### Bioworld Technology, Inc.

Add: 1660 South Highway 100, Suite 500 St. Louis Park, MN 55416, USA.

Email: [info@bioworld.com](mailto:info@bioworld.com)

Tel: 6123263284

Fax: 6122933841

### Bioworld technology, co. Ltd.

Add: No 9, weidi road Qixia District Nanjing, 210046, P. R. China.

Email: [info@biogot.com](mailto:info@biogot.com)

Tel: 0086-025-68037686

Fax: 0086-025-68035151