

Naples phlebovirus Nucleocapsid Protein (SFNV)

Catalog: NCP0139

Tag: His-tag

Source: E. coli Expression

BackGround:

Phleboviruses are arthropod-borne RNA viruses with a genomic organization consisting of three segments of single-stranded RNA, designated S (small), M (medium) and L (large), encoding the nucleoprotein and non-structural (NS) protein, envelope glycoproteins and the viral polymerase, respectively. Based on antigenic relationships, the genus Phlebovirus is further subdivided into the sandfly fever and Uukuniemi groups. Most of the viruses in the sandfly fever group are associated with and presumably transmitted by phlebotomine sandflies of the family Psychodidae. Sandflies are widely distributed in all Mediterranean countries and their activity peaks during summer. Sandflies are abundant in peri-urban and rural environments, often close to domestic animals and human populations.

Product:

Soluble protein;PBS,PH=7.4

Molecular Weight:

759bp;27kDa

Entrez-Gene/ Swiss-Prot:

EF201829.1

Purification&Purity:

Transferred into competent cells and the supernatant was purified by NI column affinity chromatography and the

purity is > 85% (by SDS-PAGE).

Applications:

Reseach

Storage&Stability:

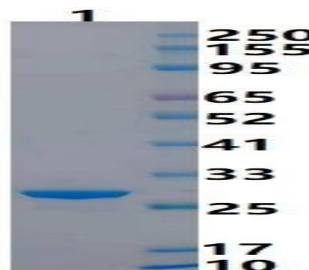
Store at 4 °C short term. Aliquot and store at -20 °C long term. Avoid freeze-thaw cycles.

Information:

Carrier:pET30a-SFNV-NP-His(C-term)

Virus:Sandfly fever Naples virus strain Sabin segment S

DATA:



Naples phlebovirus Nucleocapsid Protein, His Tag on SDS-PAGE under reducing (R) condition. The gel was stained overnight with Coomassie Blue. The purity of the protein is greater than 85%.

Note:

For research use only, not for use in diagnostic procedure.

Bioworld Technology, Inc.

Add: 1660 South Highway 100, Suite 500 St. Louis Park,
MN 55416,USA.

Email: info@bioworld.com

Tel: 6123263284

Fax: 6122933841

Bioworld technology, co. Ltd.

Add: No 9, weidi road Qixia District Nanjing, 210046,
P. R. China.

Email: info@biogot.com

Tel: 0086-025-68037686

Fax: 0086-025-68035151