



## S1-RBD Protein HRP

Catalog: NCP0089H

Type: 2019-nCoV

Source: E.coli

### BackGround:

The pre-coupled magnetic beads coupled with biotinylated SARS-CoV-2 Spike RBD protein to streptavidin conjugated magnetic beads, which can capture the Anti-SARS-CoV-2 antibody or ACE2 protein from cell or serum sample. The beads are in uniform size, narrow size distribution with large surface area and unique surface coating, which can help you get the best performance and highly reproducible results. This very first SARS-CoV-2 Spike protein RBD-coupled magnetic beads will bring great convenience with minimum non-specific binding and developed protocols. This ready to use products could greatly save your time and hassle.

E. coli Expression vector of coronavirus surface glycoprotein S1-RBD with N terminal 6xHis tag

### Product:

PBS, pH7.4

SIZE:100ug/1mg

### Size:

~ 30 kDa

### Swiss-Prot:

QHD43416.1

### Purification&Purity:

The protein was purified from E.coli and the purity is > 95% (by SDS-PAGE).

### Applications:

ELISA

### Storage&Stability:

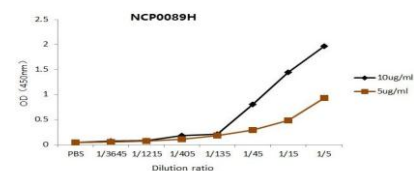
The product at -20°C for up to 24 months.

### Protein length:

Full length protein

### DATA:

#### ELISA experiment



1.Coating original concentration: 5ug/ml or 10ug/ml  
100ul/hole sample is ACE2-hFc protein (NCP0090)  
2. Protein : NCP0089H S1-RBD Protein HRP  
3.Develop :15min 100ul/hole  
4.Stop:stop buffer 50ul/hole  
5.ELISA result are shown in the figure

### Note:

For research use only, not for use in diagnostic procedure.

### Bioworld Technology, Inc.

Add: 1660 South Highway 100, Suite 500 St. Louis Park,  
MN 55416, USA.

Email: [info@bioworld.com](mailto:info@bioworld.com)

Tel: 6123263284

Fax: 6122933841

### Bioworld technology, co. Ltd.

Add: No 9, weidi road Qixia District Nanjing, 210046,  
P. R. China.

Email: [info@biogot.com](mailto:info@biogot.com)

Tel: 0086-025-68037686

Fax: 0086-025-68035151