

SFG polyclonal antibody (5)

Catalog: NCP0039

Host: Rabbit

Reactivity: COVID-19

BackGround:

LOCUS:QHD43416 1273aa linear VRL
18-MAR-2020

DEFINITION:surface glycoprotein [Severe acute respiratory syndrome coronavirus 2].

ACCESSION:QHD43416

VERSION:QHD43416.1

DBSOURCE:accession MN908947.3

SOURCE:Severe acute respiratory syndrome coronavirus 2 (SARS-CoV2)

ORGANISM:Viruses; Riboviria; Nidovirales; Coronaviridae; Orthocoronavirinae; Betacoronavirus; Sarbecovirus.

Product:

Rabbit IgG, 1mg/ml in PBS with 0.02% sodium azide, 10% glycerol, pH7.2

Size:

100ug/1mg

Swiss-Prot:

QHD43416.1

Purification&Purity:

The antibody was affinity-purified from rabbit antiserum by affinity-chromatography using epitope-specific immunogen and the purity is > 95% (by SDS-PAGE).

Applications:

ELISA

WB: 1:500~1000

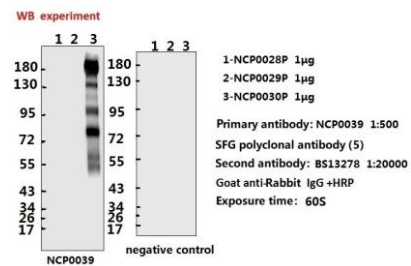
Storage&Stability:

Store at 4 °C short term. Aliquot and store at -20 °C long term. Avoid freeze-thaw cycles.

Specificity:

SFG polyclonal antibody detects endogenous levels of SFG protein.

DATA:



ELISA experiment

	1	2	
A	0.418	0.108	1:500
B	0.349	0.152	1:1000
C	0.248	0.154	1:2000
D	0.182	0.152	1:4000
E			
F			
G			
H			

NCP0039 NCP0039P

1. coating original concentration: 2ug/ml. 100ul/hole sample is RBD(NCP0029P) ECD(NCP0030P)
2. primary antibody: NCP0039 SFG polyclonal antibody (5)
3. second antibody: BS13278 Goat anti-Rabbit IgG +HRP 1:10000
4. develop :15min 100ul/hole
5. stop: stop buffer 50ul/hole
6. ELISA result are shown in the figure

Note:

For research use only, not for use in diagnostic procedure.

Bioworld Technology, Inc.

Add: 1660 South Highway 100, Suite 500 St. Louis Park, MN 55416, USA.

Email: info@bioworld.com

Tel: 6123263284

Fax: 6122933841

Bioworld technology, co. Ltd.

Add: No 9, weidi road Qixia District Nanjing, 210046, P. R. China.

Email: info@biogot.com

Tel: 0086-025-68037686

Fax: 0086-025-68035151