

Struface glycoprotein(14-1213AA) polyclonal antibody

Catalog: NCP0038

Host: Rabbit

Source: COVID-19

BackGround:

LOCUS:QHD43416 1273aa linear VRL
18-MAR-2020

DEFINITION:surface glycoprotein [Severe acute respiratory syndrome coronavirus 2].

ACCESSION:QHD43416

VERSION:QHD43416.1

DBSOURCE:accession MN908947.3

SOURCE:Severe acute respiratory syndrome coronavirus 2 (SARS-CoV2)

ORGANISM:Viruses; Riboviria; Nidovirales; Coronaviridae; Orthocoronavirinae; Betacoronavirus; Sarbecovirus.

Product:

Rabbit IgG, 1mg/ml in PBS with 0.02% sodium azide, 10% glycerol, pH7.2

Size:

100ug/1mg

Swiss-Prot:

QHD43416.1

Purification&Purity:

The antibody was affinity-purified from rabbit antiserum by affinity-chromatography using epitope-specific immunogen and the purity is > 95% (by SDS-PAGE).

Applications:

ELISA

WB: 1:500~1000

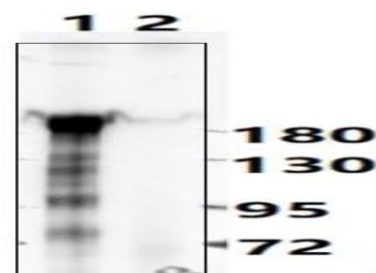
Storage&Stability:

Store at 4 °C short term. Aliquot and store at -20 °C long term. Avoid freeze-thaw cycles.

Specificity:

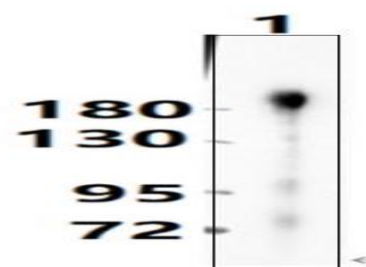
SFG polyclonal antibody detects endogenous levels of SFG protein.

DATA:



1-S-ECD protein

2-S-RBD protein



1-S-ECD protein

Note:

For research use only, not for use in diagnostic procedure.

Bioworld Technology, Inc.

Add: 1660 South Highway 100, Suite 500 St. Louis Park, MN 55416, USA.

Email: info@bioworld.com

Tel: 6123263284

Fax: 6122933841

Bioworld technology, co. Ltd.

Add: No 9, weidi road Qixia District Nanjing, 210046, P. R. China.

Email: info@biogot.com

Tel: 0086-025-68037686

Fax: 0086-025-68035151