

## ORF8 Protein(16-121AA) polyclonal antibody

Catalog: NCP0036

Host: Rabbit

Reactivity: COVID-19

### BackGround:

LOCUS:QHD43422 121aa linear VRL 18-MAR-2020  
DEFINITION:ORF8 protein [Severe acute respiratory syndrome coronavirus 2].  
ACCESSION:QHD43422  
VERSION:QHD43422.1  
DBSOURCE:accession MN908947.3  
SOURCE:Severe acute respiratory syndrome coronavirus 2 (SARS-CoV2)  
ORGANISM:Viruses; Riboviria; Nidovirales; Coronavirineae; Coronaviridae; Orthocoronavirinae; Betacoronavirus; Sarbecovirus.

### Product:

Rabbit IgG, 1mg/ml in PBS with 0.02% sodium azide, 10% glycerol, pH7.2

### Size:

100ug/1mg

### Swiss-Prot:

QHD43422.1

### Purification&Purity:

The antibody was affinity-purified from rabbit antiserum by affinity-chromatography using epitope-specific im-

munogen and the purity is > 95% (by SDS-PAGE).

### Applications:

WB: 1:500~1000

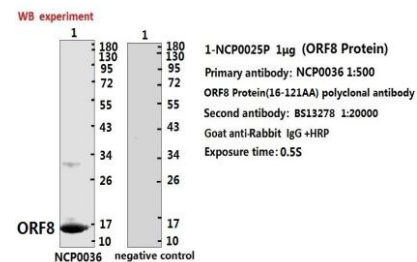
### Storage&Stability:

Store at 4 °C short term. Aliquot and store at -20 °C long term. Avoid freeze-thaw cycles.

### Specificity:

ORF8 polyclonal antibody detects endogenous levels of ORF8 protein.

### DATA:



### Note:

For research use only, not for use in diagnostic procedure.

### Bioworld Technology, Inc.

Add: 1660 South Highway 100, Suite 500 St. Louis Park, MN 55416, USA.

Email: [info@bioworld.com](mailto:info@bioworld.com)

Tel: 6123263284

Fax: 6122933841

### Bioworld technology, co. Ltd.

Add: No 9, weidi road Qixia District Nanjing, 210046, P. R. China.

Email: [info@biogot.com](mailto:info@biogot.com)

Tel: 0086-025-68037686

Fax: 0086-025-68035151