

S-RBD polyclonal antibody

Catalog: NCP0033

Host: Rabbit

Reactivity: COVID-19

BackGround:

LOCUS:QHD43416 1273aa linear VRL
18-MAR-2020

DEFINITION:surface glycoprotein [Severe acute respiratory syndrome coronavirus 2].

ACCESSION:QHD43416

VERSION:QHD43416.1

DBSOURCE:accession MN908947.3

SOURCE:Severe acute respiratory syndrome coronavirus 2 (SARS-CoV2)

ORGANISM:Viruses; Riboviria; Nidovirales; Coronidovirineae; Coronaviridae; Orthocoronavirinae; Betacoronavirus; Sarbecovirus.

Product:

Rabbit IgG, 1mg/ml in PBS with 0.02% sodium azide, 10% glycerol, pH7.2

Molecular Weight:

~ 85 kDa

Swiss-Prot:

QHD43416.1

Purification&Purity:

The antibody was affinity-purified from rabbit antiserum by affinity-chromatography using epitope-specific immunogen and the purity is > 95% (by SDS-PAGE).

Applications:

WB: 1:2000~10000

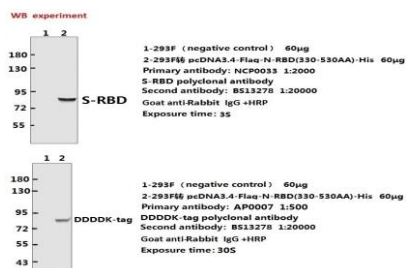
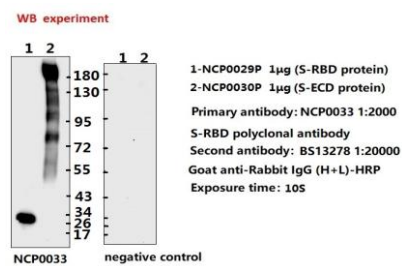
Storage&Stability:

Store at 4 °C short term. Aliquot and store at -20 °C long term. Avoid freeze-thaw cycles.

Specificity:

S-RCD pAb detects endogenous levels of S-RCD protein.

DATA:



Note:

For research use only, not for use in diagnostic procedure.

Bioworld Technology, Inc.

Add: 1660 South Highway 100, Suite 500 St. Louis Park,
MN 55416, USA.Email: info@bioworld.com

Tel: 6123263284

Fax: 6122933841

Bioworld technology, co. Ltd.

Add: No 9, weidi road Qixia District Nanjing, 210046,
P. R. China.Email: info@biogot.com

Tel: 0086-025-68037686

Fax: 0086-025-68035151