

## SFG polyclonal antibody (2)

Catalog: NCP0021

Host: Rabbit

Reactivity: COVID-19

### BackGround:

LOCUS:QHD43416 1273aa linear VRL  
18-MAR-2020

DEFINITION:surface glycoprotein [Severe acute respiratory syndrome coronavirus 2].

ACCESSION:QHD43416

VERSION:QHD43416.1

DBSOURCE:accession MN908947.3

SOURCE:Severe acute respiratory syndrome coronavirus 2 (SARS-CoV2)

ORGANISM:Viruses; Riboviria; Nidovirales; Coronidovirineae; Coronaviridae; Orthocoronavirinae; Betacoronavirus; Sarbecovirus.

### Product:

Rabbit IgG, 1mg/ml in PBS with 0.02% sodium azide, 10% glycerol, pH7.2

### Size:

100ug/1mg

### Swiss-Prot:

QHD43416.1

### Purification&Purity:

The antibody was affinity-purified from rabbit antiserum by affinity-chromatography using epitope-specific immunogen and the purity is > 95% (by SDS-PAGE).

### Applications:

ELISA

WB: 1:500~1000

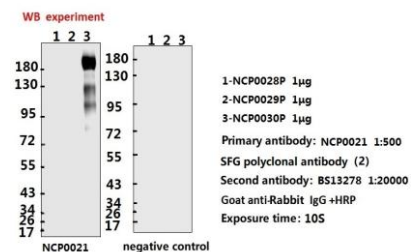
### Storage&Stability:

Store at 4 °C short term. Aliquot and store at -20 °C long term. Avoid freeze-thaw cycles.

### Specificity:

SFG polyclonal antibody detects endogenous levels of SFG protein.

### DATA:



**ELISA experiment**

	1	2	
A	0.926	0.151	1:1000
B	0.365	0.134	1:10000
C	0.294	0.119	1:20000
D	0.164	0.127	1:40000
E	0.134	0.114	1:80000
F	0.143	0.123	1:160000
G	0.135	0.111	1:320000
H	0.129	0.103	Blank control

NCP0030P NCP0029P  
NCP0021

1. coating original concentration: 2ug/ml, 100ul/hole sample is RBD(NCP0029P) ECD(NCP0030P)  
2. primary antibody: NCP0021 SFG polyclonal antibody (2)  
3. second antibody: BS13278 Goat anti-Rabbit IgG +HRP 1:10000  
4. develop: 15min 100ul/hole  
5. stop: stop buffer 50ul/hole  
6. ELISA result are shown in the figure

### Note:

For research use only, not for use in diagnostic procedure.

### Bioworld Technology, Inc.

Add: 1660 South Highway 100, Suite 500 St. Louis Park, MN 55416, USA.

Email: [info@bioworld.com](mailto:info@bioworld.com)

Tel: 6123263284

Fax: 6122933841

### Bioworld technology, co. Ltd.

Add: No 9, weidi road Qixia District Nanjing, 210046, P. R. China.

Email: [info@biogot.com](mailto:info@biogot.com)

Tel: 0086-025-68037686

Fax: 0086-025-68035151