

ORF6 polyclonal antibody

Catalog: NCP0013

Host: Rabbit

Reactivity: COVID-19

BackGround:

LOCUS:QHD43420 61aa linear VRL 18-MAR-2020
DEFINITION:ORF6 protein [Severe acute respiratory syndrome coronavirus 2].
ACCESSION:QHD43420
VERSION:QHD43420.1
DBSOURCE:accession MN908947.3
SOURCE:Severe acute respiratory syndrome coronavirus 2 (SARS-CoV2)
ORGANISM:Viruses; Riboviria; Nidovirales; Coronaviridae; Orthocoronavirinae; Betacoronavirus; Sarbecovirus.

Product:

Rabbit IgG, 1mg/ml in PBS with 0.02% sodium azide, 10% glycerol, pH7.2

Molecular Weight:

~ 14 kDa

Swiss-Prot:

QHD43420.1

Purification&Purity:

The antibody was affinity-purified from rabbit antiserum by affinity-chromatography using epitope-specific immunogen and the purity is > 95% (by SDS-PAGE).

Applications:

WB: 1:500~1000

Storage&Stability:

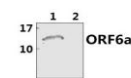
Store at 4 °C short term. Aliquot and store at -20 °C long term. Avoid freeze-thaw cycles.

Specificity:

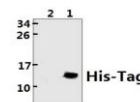
ORF6 polyclonal antibody detects endogenous levels of ORF6 protein.

DATA:

WB experiment



1- 293F transfection PCDNA3.1-ORF6-His 60µg
2- 293F (negative control) 60µg
Primary antibody: NCP0013 1:500
ORF6 polyclonal antibody
Second antibody: BS13278 1:20000
Goat anti-Rabbit IgG +HRP
Exposure time: 60s



1- 293F transfection PCDNA3.1-ORF6-His 60µg
2- 293F (negative control) 60µg
Primary antibody: AP0032 1:500
His-tag polyclonal antibody
Second antibody: BS13278 1:20000
Goat anti-Rabbit IgG +HRP
Exposure time: 30s

Size:100ug/1mg

Note:

For research use only, not for use in diagnostic procedure.

Bioworld Technology, Inc.

Add: 1660 South Highway 100, Suite 500 St. Louis Park, MN 55416, USA.

Email: info@bioworld.com

Tel: 6123263284

Fax: 6122933841

Bioworld technology, co. Ltd.

Add: No 9, weidi road Qixia District Nanjing, 210046, P. R. China.

Email: info@biogol.com

Tel: 0086-025-68037686

Fax: 0086-025-68035151