

SPN polyclonal antibody (2)

Catalog: NCP0007

Host: Rabbit

Reactivity: COVID-19

BackGround:

LOCUS:QHD43423 419aa linear VRL 18-MAR-2020
DEFINITION:nucleocapsid phosphoprotein [Severe acute respiratory syndrome coronavirus 2].

ACCESSION:QHD43423

VERSION:QHD43423.2

DBSOURCE:accession MN908947.3

SOURCE:Severe acute respiratory syndrome coronavirus 2 (SARS-CoV2)

ORGANISM:Viruses; Riboviria; Nidovirales; Coronaviridae; Orthocoronavirinae; Betacoronavirus; Sarbecovirus.

Product:

Rabbit IgG,1mg/ml in PBS with 0.02% sodium azide,10% glycerol, pH7.2

Size:

100ug/1mg

Swiss-Prot:

QHD43423.2

Purification&Purity:

The antibody was affinity-purified from rabbit antiserum by affinity-chromatography using epitope-specific immunogen and the purity is > 95% (by SDS-PAGE).

Applications:

ELISA

WB: 1:500~1000

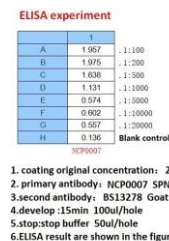
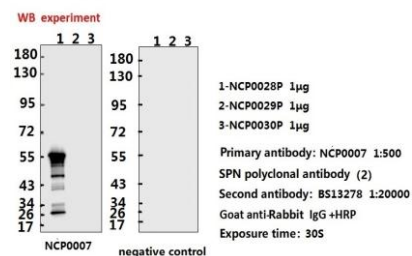
Storage&Stability:

Store at 4 °C short term. Aliquot and store at -20 °C long term. Avoid freeze-thaw cycles.

Specificity:

SPN polyclonal antibody detects endogenous levels of SPN protein.

DATA:



Note:

For research use only, not for use in diagnostic procedure.

Bioworld Technology, Inc.

Add: 1660 South Highway 100, Suite 500 St. Louis Park, MN 55416, USA.

Email: info@bioworld.com

Tel: 6123263284

Fax: 6122933841

Bioworld technology, co. Ltd.

Add: No 9, weidi road Qixia District Nanjing, 210046, P. R. China.

Email: info@biogot.com

Tel: 0086-025-68037686

Fax: 0086-025-68035151