

## Lamin B1(3C6) monoclonal antibody

Catalog: MB8006

Host: Mouse

Reactivity: Human, Mouse, Rat

### BackGround:

An important part of the nucleus is formed by nuclear lamina. Nuclear lamins form a network of filaments at the nucleoplasmic site of the nuclear membrane. Two main subtypes of nuclear lamins can be distinguished, i.e. A type lamins and B type lamins. The A type lamins comprise a set of three proteins arising from the same gene by alternative splicing, i.e. lamin A, lamin C and lamin A-delta-110, while the B-type lamins include two proteins arising from two distinct genes, i.e. lamin B1 and lamin B2. The nuclear lamins comprise a unique subclass of the intermediate filament protein family. They share a molecular domain organisation with the other intermediate filament proteins in that they are fibrous molecules that have an aminoterminal globular head, a central rod of alpha helices and a carboxy terminal globular domain. Many biochemical and molecular features of lamins have been studied, but their functions remain still largely undetermined. One of the functions ascribed to the lamina is the maintenance of the structural integrity of the nucleus.

### Product:

1 mg/ml in Phosphate buffered saline (PBS) with 0.05% sodium azide, approx. pH 7.3.

### Molecular Weight:

~ 68 kDa

### Swiss-Prot:

P20700

### Purification&Purity:

The antibody was affinity-purified from mouse antiserum by affinity-chromatography using epitope-specific immunogen and the purity is > 95% (by SDS-PAGE).

### Applications:

WB: 1:5000~1:15000

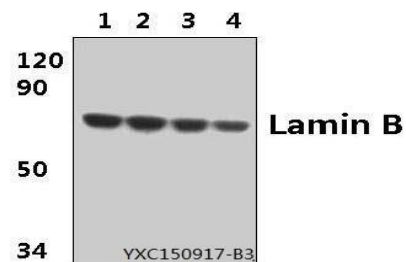
### Storage&Stability:

Store at 4 °C short term. Aliquot and store at -20 °C long term. Avoid freeze-thaw cycles.

### Specificity:

Lamin B1 (3C6) monoclonal antibody detects endogenous levels of LMNB protein.

### DATA:



Western blot (WB) analysis of Lamin B1(3C6) mAb at 1:5000 dilution

Lane1:HeLa whole cell lysate(40ug)

Lane2:A549 whole cell lysate(40ug)

Lane3:RAW264.7 whole cell lysate(40ug)

Lane4:PC12 whole cell lysate(40ug)

### Note:

For research use only, not for use in diagnostic procedure.

### Bioworld Technology, Inc.

Add: 1660 South Highway 100, Suite 500 St. Louis Park, MN 55416, USA.

Email: [info@bioworld.com](mailto:info@bioworld.com)

Tel: 6123263284

Fax: 6122933841

### Bioworld technology, co. Ltd.

Add: No 9, weidi road Qixia District Nanjing, 210046, P. R. China.

Email: [info@biogot.com](mailto:info@biogot.com)

Tel: 0086-025-68037686

Fax: 0086-025-68035151