



Anti-Klebsiella pneumoniae carbapenemases (KPC), Rabbit mAb

Catalog: MB67279

Host: 293F

Clone: KPC-G11

Isotype:

Rabbit IgG1, Kappa

Product:

1mg/ml in PBS, pH7.4

Molecular Weight:**GenBank:**

QBC89188.1

Purification&Purity:

The antibody was affinity-purified by protein A and the purity is > 95% (by SDS-PAGE).

Applications:

WB: 1:500~1:2000

ELISA: 1:5000~10000

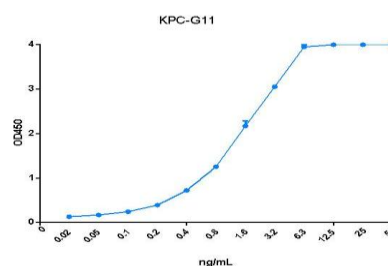
Storage&Stability:

Store at 4 °C short term. Aliquot and store at -20 °C long term. Avoid freeze-thaw cycles.

Preparation:

Using phage display technology, library of antibody was constructed from peripheral blood of New Zealand rabbits

which had been immunized by KPC protein. Screening the library with recombinant KPC protein, the target antibody was obtained and then was purified by recombinant and expression.

DATA:

By using Indirect ELISA to detect the binding activity of KPC rabbit monoclonal antibody and recombinant KPC protein. Antigen concentration was 1 µg/ml.

Note:

For research use only, not for use in diagnostic procedure.

Bioworld Technology, Inc.

Add: 1660 South Highway 100, Suite 500 St. Louis Park, MN 55416, USA.

Email: info@bioworld.com

Tel: 6123263284

Fax: 6122933841

Bioworld technology, co. Ltd.

Add: No 9, weidi road Qixia District Nanjing, 210046, P. R. China.

Email: info@biogot.com

Tel: 0086-025-68037686

Fax: 0086-025-68035151