

**Anti-imipenemase metallo- $\beta$ -lactamase (IMP), Rabbit mAb**

Catalog: MB67276

Host: 293F

Clone: IMP-H9

**Isotype:**

Rabbit IgG1, Kappa

**Product:**

1mg/ml in PBS, pH7.4

**Molecular Weight:****GenBank:**

HAS1313528.1

**Purification&Purity:**

The antibody was affinity-purified by protein A and the purity is > 95% (by SDS-PAGE).

**Applications:**

WB: 1:500~1:2000

ELISA: 1:5000~10000

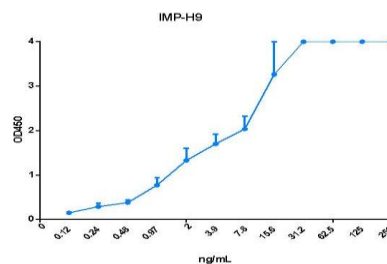
**Storage&Stability:**

Store at 4 °C short term. Aliquot and store at -20 °C long term. Avoid freeze-thaw cycles.

**Preparation:**

Using phage display technology, library of antibody was constructed from peripheral blood of New Zealand rabbits

which had been immunized by IMP protein. Screening the library with recombinant IMP protein, the target antibody was obtained and then was purified by recombinant and expression.

**DATA:**

By using Indirect ELISA to detect the binding activity of IMP rabbit monoclonal antibody and recombinant IMP protein. Antigen concentration was 1  $\mu$ g/ml.

**Note:**

For research use only, not for use in diagnostic procedure.

**Bioworld Technology, Inc.**

Add: 1660 South Highway 100, Suite 500 St. Louis Park, MN 55416, USA.

Email: [info@bioworld.com](mailto:info@bioworld.com)

Tel: 6123263284

Fax: 6122933841

**Bioworld technology, co. Ltd.**

Add: No 9, weidi road Qixia District Nanjing, 210046, P. R. China.

Email: [info@biogol.com](mailto:info@biogol.com)

Tel: 0086-025-68037686

Fax: 0086-025-68035151