

## PLM (Phospho-S68) monoclonal antibody

Catalog: MB67269

Host: Mouse

Reactivity: Mouse

### BackGround:

Associates with and regulates the activity of the sodium/potassium-transporting ATPase (NKA) which transports Na<sup>+</sup> out of the cell and K<sup>+</sup> into the cell. Inhibits NKA activity in its unphosphorylated state and stimulates activity when phosphorylated (By similarity). Reduces glutathionylation of the NKA beta-1 subunit ATP1B1, thus reversing glutathionylation-mediated inhibition of ATP1B1. Contributes to female sexual development by maintaining the excitability of neurons which secrete gonadotropin-releasing hormone.

### Product:

Mouse IgG1. Liquid in PBS, pH 7.3, 30% glycerol, and 0.01% sodium azide.

### Molecular Weight:

~ 10 kDa

### Swiss-Prot:

Q9Z239

### Purification&Purity:

This antibody is purified through a protein G column.

### Applications:

WB (1/500 - 1/1000)

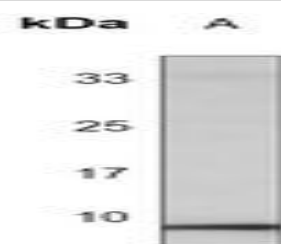
### Storage&Stability:

Store at 4 °C short term. Aliquot and store at -20 °C long term. Avoid freeze-thaw cycles.

### Specificity:

Recognizes endogenous levels of PLM (pS68) protein.

### DATA:



Western blot analysis of PLM (pS68) expression in 293 transfected with a plasmid encoding PLM (A) whole cell lysates.

### Note:

For research use only, not for use in diagnostic procedure.

### Bioworld Technology, Inc.

Add: 1660 South Highway 100, Suite 500 St. Louis Park, MN 55416, USA.

Email: [info@bioworld.com](mailto:info@bioworld.com)

Tel: 6123263284

Fax: 6122933841

### Bioworld technology, co. Ltd.

Add: No 9, weidi road Qixia District Nanjing, 210046, P. R. China.

Email: [info@biogol.com](mailto:info@biogol.com)

Tel: 0086-025-68037686

Fax: 0086-025-68035151