

p100 monoclonal antibody

Catalog: MB67248

Host: Mouse

Reactivity: Human, Mouse

BackGround:

The Ras family small GTPase Ran is involved in nuclear envelope formation, assembly of the mitotic spindle, and nuclear transport. TPX2, a target of active Ran (RanGTP), is a microtubule nucleating protein. TPX2 is inactive when bound to nuclear importin- α . RanGTP activity disrupts this interaction, relieving inhibition of TPX2. TPX2 binding activates Aurora A kinase and promotes its localization to the mitotic spindle. DNA damage in mitosis leads to loss of interaction between Aurora A and TPX2 and inactivation of Aurora A kinase. TPX2 is highly expressed in pancreatic cancer cells, and knock-down of TPX2 expression in these cells is associated with increased sensitivity to paclitaxel.

Product:

Mouse IgG1. Liquid in PBS, pH 7.3, 30% glycerol, and 0.01% sodium azide.

Molecular Weight:

~ 100 kDa

Swiss-Prot:

Q9ULW0

Purification&Purity:

This antibody is purified through a protein G column.

Applications:

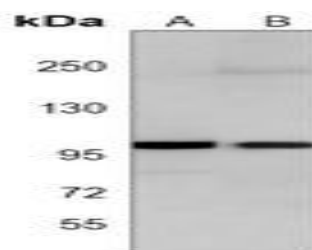
WB (1/500 - 1/1000)

Storage&Stability:

Store at 4 °C short term. Aliquot and store at -20 °C long term. Avoid freeze-thaw cycles.

Specificity:

Recognizes endogenous levels of p100 protein.

DATA:

Western blot analysis of p100 expression in MCF7 (A), HT29 (B) whole cell lysates.

Note:

For research use only, not for use in diagnostic procedure.

Bioworld Technology, Inc.

Add: 1660 South Highway 100, Suite 500 St. Louis Park, MN 55416, USA.

Email: info@bioworld.com

Tel: 6123263284

Fax: 6122933841

Bioworld technology, co. Ltd.

Add: No 9, weidi road Qixia District Nanjing, 210046, P. R. China.

Email: info@biogot.com

Tel: 0086-025-68037686

Fax: 0086-025-68035151