

RAB21 monoclonal antibody

Catalog: MB67246

Host: Mouse

Reactivity: Human, Monkey

BackGround:

Small GTPase involved in membrane trafficking control. During the mitosis of adherent cells, controls the endosomal trafficking of integrins which is required for the successful completion of cytokinesis. Regulates integrin internalization and recycling, but does not influence the traffic of endosomally translocated receptors in general (By similarity). As a result, may regulate cell adhesion and migration (By similarity). Involved in neurite growth (By similarity). Following SBF2/MTMT13-mediated activation in response to starvation-induced autophagy, binds to and regulates SNARE protein VAMP8 endolysosomal transport required for SNARE-mediated autophagosome-lysosome fusion. Modulates protein levels of the cargo receptors TMED2 and TMED10, and required for appropriate Golgi localization of TMED10.

Product:

Mouse IgG2b kappa. Liquid in PBS, pH 7.3, 30% glycerol, and 0.01% sodium azide.

Molecular Weight:

~ 24 kDa

Swiss-Prot:

Q9UL25

Purification&Purity:

This antibody is purified through a protein G column.

Applications:

WB (1/500 - 1/1000)

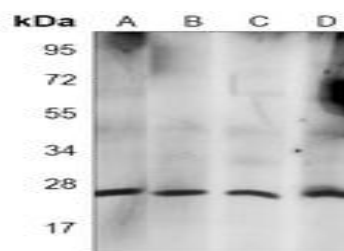
Storage&Stability:

Store at 4 °C short term. Aliquot and store at -20 °C long term. Avoid freeze-thaw cycles.

Specificity:

Recognizes endogenous levels of RAB21 protein.

DATA:



Western blot analysis of RAB21 expression in MCF7 (A), A431 (B), Hela (C), COS7 (D) whole cell lysates.

Note:

For research use only, not for use in diagnostic procedure.

Bioworld Technology, Inc.

Add: 1660 South Highway 100, Suite 500 St. Louis Park, MN 55416, USA.

Email: info@bioworld.com

Tel: 6123263284

Fax: 6122933841

Bioworld technology, co. Ltd.

Add: No 9, weidi road Qixia District Nanjing, 210046, P. R. China.

Email: info@biogot.com

Tel: 0086-025-68037686

Fax: 0086-025-68035151