

## NUP50 monoclonal antibody

Catalog: MB67245

Host: Mouse

Reactivity: Human

### BackGround:

Component of the nuclear pore complex that has a direct role in nuclear protein import. Actively displaces NLSs from importin- $\alpha$ , and facilitates disassembly of the importin- $\alpha$ :beta-cargo complex and importin recycling. Interacts with regulatory proteins of cell cycle progression including CDKN1B (By similarity). This interaction is required for correct intracellular transport and degradation of CDKN1B (By similarity).

### Product:

Mouse IgG1 kappa. Supplied in crude ascites with 0.01% sodium azide.

### Molecular Weight:

~ 55 kDa

### Swiss-Prot:

Q9UKX7

### Purification&Purity:

### Applications:

WB (1/500 - 1/1000)

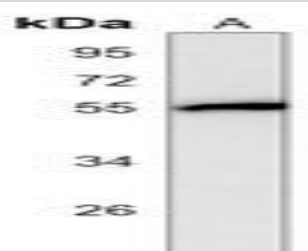
### Storage&Stability:

Store at 4 °C short term. Aliquot and store at -20 °C long term. Avoid freeze-thaw cycles.

### Specificity:

Recognizes endogenous levels of NUP50 protein.

### DATA:



Western blot analysis of NUP50 expression in Jurkat (A) whole cell lysates.

### Note:

For research use only, not for use in diagnostic procedure.

### Bioworld Technology, Inc.

Add: 1660 South Highway 100, Suite 500 St. Louis Park, MN 55416, USA.

Email: [info@bioworld.com](mailto:info@bioworld.com)

Tel: 6123263284

Fax: 6122933841

### Bioworld technology, co. Ltd.

Add: No 9, weidi road Qixia District Nanjing, 210046, P. R. China.

Email: [info@biogol.com](mailto:info@biogol.com)

Tel: 0086-025-68037686

Fax: 0086-025-68035151