

## FAM120A monoclonal antibody

**Catalog:** MB67230

**Host:** Mouse

**Reactivity:** Human

**BackGround:**

May participate in mRNA transport in the cytoplasm (By similarity). Critical component of the oxidative stress-induced survival signaling. Activates src family kinases and acts as a scaffolding protein enabling src family kinases to phosphorylate and activate PI3-kinase. Binds RNA and promotes the secretion of IGF-II. May play a pivotal role in the progression of scirrhou-type gastric cancer by supporting cancer cell survival in environments with various oxidative stresses.

**Product:**

Mouse IgG1 kappa. Liquid in PBS, pH 7.3, 30% glycerol, and 0.01% sodium azide.

**Molecular Weight:**

~ 131 kDa

**Swiss-Prot:**

Q9NZB2

**Purification&Purity:**

This antibody is purified through a protein G column.

**Applications:**

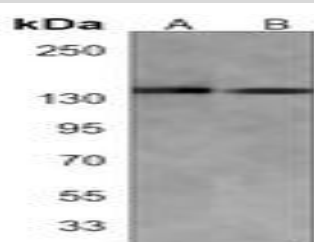
WB (1/500 - 1/2000), IHC (1/50 - 1/200), IF/ICC (1/10 - 1/50)

**Storage&Stability:**

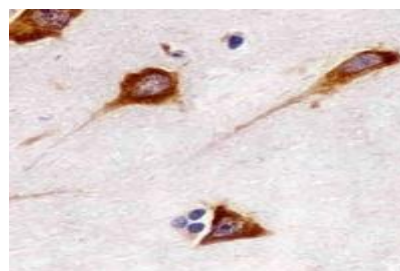
Store at 4 °C short term. Aliquot and store at -20 °C long term. Avoid freeze-thaw cycles.

**Specificity:**

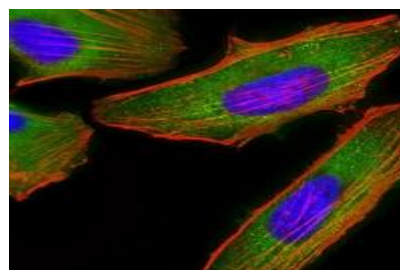
Recognizes endogenous levels of FAM120A protein.

**DATA:**


Western blot analysis of FAM120A expression in MCF7 (A), U2OS (B) whole cell lysates.



Immunohistochemical analysis of FAM120A staining in human brain formalin fixed paraffin embedded tissue section. The section was pre-treated using heat mediated antigen retrieval with sodium citrate buffer (pH 6.0). The section was then incubated with the antibody at room temperature and detected using an HRP conjugated compact polymer system. DAB was used as the chromogen. The section was then counterstained with haematoxylin and mounted with DPX.



Immunofluorescent analysis of FAM120A staining in Hela cells. Formalin-fixed cells were permeabilized with 0.1% Triton X-100 in TBS for 5-10 minutes and blocked with 3% BSA-PBS for 30 minutes at room temperature. Cells were probed with the primary antibody in 3% BSA-PBS and incubated overnight at 4 °C in a humidified chamber. Cells were washed with PBST and incubated with a AF488-conjugated secondary antibody (green) in PBS at room temperature in the dark. Phalloidin - AF555 was used to stain the cytoplasm (red). DAPI was used to stain the cell nuclei (blue).

**Note:**

For research use only, not for use in diagnostic procedure.

**Bioworld Technology, Inc.**

**Add:** 1660 South Highway 100, Suite 500 St. Louis Park, MN 55416, USA.

**Email:** [info@bioworld.com](mailto:info@bioworld.com)

**Tel:** 6123263284

**Fax:** 6122933841

**Bioworld technology, co. Ltd.**

**Add:** No 9, weidi road Qixia District Nanjing, 210046, P. R. China.

**Email:** [info@biogot.com](mailto:info@biogot.com)

**Tel:** 0086-025-68037686

**Fax:** 0086-025-68035151