

CARD9 monoclonal antibody

Catalog: MB67203

Host: Mouse

Reactivity: Human

BackGround:

CARD9 is a caspase recruitment domain (CARD)-containing adaptor protein expressed by myeloid cells. It is required for antifungal immunity downstream of pathogen detection by C-type lectin receptors (CLRs) such as Dectin-1. Recognition of carbohydrates on fungal cell walls by CLRs leads to activation of the tyrosine kinase Syk, followed by activation of PKC δ . PKC δ phosphorylates CARD9, enabling the assembly of a complex containing CARD9 and Bcl10. This complex activates NF- κ B, resulting in upregulation of inflammatory cytokines important for initiation of adaptive immunity. CARD9 was also shown to be important for the induction of IL-1 β , downstream of the viral nucleic acid sensor RIG-I, as well as for the generation of reactive oxygen species important for bacterial killing by macrophages.

Product:

Mouse IgG1 kappa. Liquid in PBS, pH 7.3, 30% glycerol, and 0.01% sodium azide.

Molecular Weight:

~ 64 kDa

Swiss-Prot:

Q9H257

Purification&Purity:

This antibody is purified through a protein G column.

Applications:

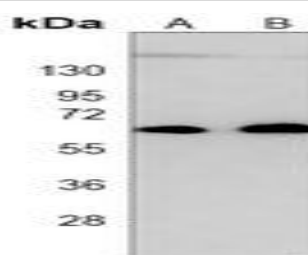
WB (1/500 - 1/1000)

Storage&Stability:

Store at 4 °C short term. Aliquot and store at -20 °C long term. Avoid freeze-thaw cycles.

Specificity:

Recognizes endogenous levels of CARD9 protein.

DATA:

Western blot analysis of CARD9 expression in K562 (A), HL60 (B) whole cell lysates.

Note:

For research use only, not for use in diagnostic procedure.

Bioworld Technology, Inc.

Add: 1660 South Highway 100, Suite 500 St. Louis Park, MN 55416, USA.

Email: info@bioworld.com

Tel: 6123263284

Fax: 6122933841

Bioworld technology, co. Ltd.

Add: No 9, weidi road Qixia District Nanjing, 210046, P. R. China.

Email: info@biogol.com

Tel: 0086-025-68037686

Fax: 0086-025-68035151