

WBP2 monoclonal antibody

Catalog: MB67170

Host: Mouse

Reactivity: Human, Mouse

BackGround:

WW-domain binding protein 2 (WBP2) is an adaptor protein first identified in a screen for proteins that interact with YAP1. WBP2 was subsequently shown to bind other WW domain-containing proteins, including TAZ and NEDD4-like ubiquitin-protein ligases. There is strong evidence for a conserved functional role for WBP2 in the Hippo kinase tumor suppressor pathway. WBP2 interaction is required for the oncogenic properties of TAZ in breast cancer cells and the growth-promoting properties of the YAP homolog Yorkie in *Drosophila*. In vitro studies have also suggested that WBP2 may act as a transcriptional co-activator of both estrogen and progesterone receptors; this interaction was shown to be dependent upon tyrosine phosphorylation of WBP2 by c-Src and c-Yes kinases.

Product:

Mouse IgG1. Liquid in PBS, pH 7.3, 30% glycerol, and 0.01% sodium azide.

Molecular Weight:

~ 36 kDa

Swiss-Prot:

Q969T9

Purification&Purity:

This antibody is purified through a protein G column.

Applications:

WB (1/500 - 1/1000)

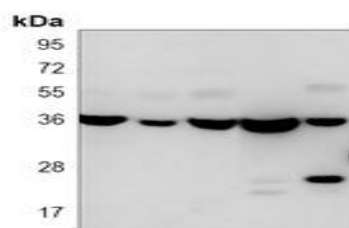
Storage&Stability:

Store at 4 °C short term. Aliquot and store at -20 °C long term. Avoid freeze-thaw cycles.

Specificity:

Recognizes endogenous levels of WBP2 protein.

DATA:



Western blot analysis of WBP2 expression in mouse heart (A), A549 (B), HL60 (C), 293 (D), A2058 (E) whole cell lysates.

Note:

For research use only, not for use in diagnostic procedure.

Bioworld Technology, Inc.

Add: 1660 South Highway 100, Suite 500 St. Louis Park, MN 55416, USA.

Email: info@bioworld.com

Tel: 6123263284

Fax: 6122933841

Bioworld technology, co. Ltd.

Add: No 9, weidi road Qixia District Nanjing, 210046, P. R. China.

Email: info@biogot.com

Tel: 0086-025-68037686

Fax: 0086-025-68035151