

## CREB3L4 monoclonal antibody

Catalog: MB67161

Host: Mouse

Reactivity: Human, Rat

### BackGround:

Transcriptional activator that may play a role in the unfolded protein response. Binds to the UPR element (UPRE) but not to CRE element. Preferentially binds DNA with to the consensus sequence 5'-T[GT]ACGT[GA][GT]-3' and has transcriptional activation activity from UPRE. Binds to NF-kappa-B site and has transcriptional activation activity from NF-kappa-B-containing regulatory elements (By similarity).

### Product:

Mouse IgG1. Liquid in PBS, pH 7.3, 30% glycerol, and 0.01% sodium azide.

### Molecular Weight:

~ 45 kDa

### Swiss-Prot:

Q8TEY5

### Purification&Purity:

This antibody is purified through a protein G column.

### Applications:

WB (1/500 - 1/1000)

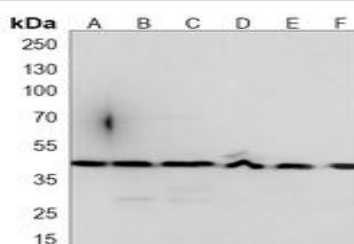
### Storage&Stability:

Store at 4 °C short term. Aliquot and store at -20 °C long term. Avoid freeze-thaw cycles.

### Specificity:

Recognizes endogenous levels of CREB3L4 protein.

### DATA:



Western blot analysis of CREB3L4 expression in Daudi (A), PC3 (B), MCF7 (C), C6 (D), L6 (E), rat brain (F) whole cell lysates.

### Note:

For research use only, not for use in diagnostic procedure.

### Bioworld Technology, Inc.

Add: 1660 South Highway 100, Suite 500 St. Louis Park, MN 55416, USA.

Email: [info@bioworld.com](mailto:info@bioworld.com)

Tel: 6123263284

Fax: 6122933841

### Bioworld technology, co. Ltd.

Add: No 9, weidi road Qixia District Nanjing, 210046, P. R. China.

Email: [info@biogol.com](mailto:info@biogol.com)

Tel: 0086-025-68037686

Fax: 0086-025-68035151