

## PIN1 monoclonal antibody

Catalog: MB67093

Host: Mouse

Reactivity: Human, Mouse, Rat, Monkey

**BackGround:**

Pin1, a member of the parvulin family of peptidyl-prolyl isomerases (PPIase), has been implicated in the G2/M transition of the mammalian cell cycle. Pin1 is a small (18 kDa) protein with two distinct functional domains: an amino-terminal WW domain and a carboxy-terminal PPIase domain. Pin1 interacts with several mitotic phosphoproteins, including Plk1, cdc25C and cdc27, and is thought to act as a phosphorylation-dependent PPIase for these target molecules.

**Product:**

Mouse IgG1. Liquid in PBS, pH 7.3, 30% glycerol, and 0.01% sodium azide.

**Molecular Weight:**

~ 18 kDa

**Swiss-Prot:**

Q13526

**Purification&Purity:**

This antibody is purified through a protein G column.

**Applications:**

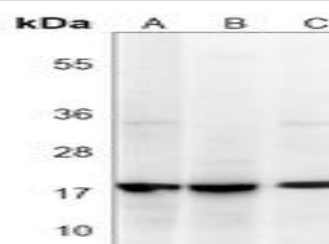
WB (1/500 - 1/1000)

**Storage&Stability:**

Store at 4 °C short term. Aliquot and store at -20 °C long term. Avoid freeze-thaw cycles.

**Specificity:**

Recognizes endogenous levels of PIN1 protein.

**DATA:**

Western blot analysis of PIN1 expression in K562 (A), HeLa (B), 293 (C) whole cell lysates.

**Note:**

For research use only, not for use in diagnostic procedure.

**Bioworld Technology, Inc.**

Add: 1660 South Highway 100, Suite 500 St. Louis Park, MN 55416, USA.

Email: [info@bioworld.com](mailto:info@bioworld.com)

Tel: 6123263284

Fax: 6122933841

**Bioworld technology, co. Ltd.**

Add: No 9, weidi road Qixia District Nanjing, 210046, P. R. China.

Email: [info@biogol.com](mailto:info@biogol.com)

Tel: 0086-025-68037686

Fax: 0086-025-68035151