

## LLH monoclonal antibody

Catalog: MB67072

Host: Mouse

Reactivity: Human

**BackGround:**

Part of a complex composed of PLOD1, P3H3 and P3H4 that catalyzes hydroxylation of lysine residues in collagen alpha chains and is required for normal assembly and cross-linking of collagen fibrils (By similarity).

Forms hydroxylysine residues in -Xaa-Lys-Gly- sequences in collagens.

These hydroxylysines serve as sites of attachment for carbohydrate units and are essential for the stability of the intermolecular collagen cross-links (Probable).

**Product:**

Mouse IgG2b kappa. Liquid in PBS, pH 7.3, 30% glycerol, and 0.01% sodium azide.

**Molecular Weight:**

~ 80 kDa

**Swiss-Prot:**

Q02809

**Purification&Purity:**

This antibody is purified through a protein G column.

**Applications:**

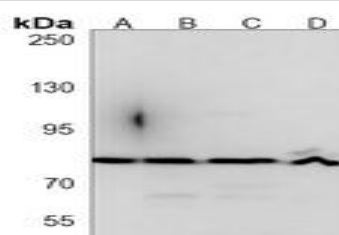
WB (1/1000 - 1/2000)

**Storage&Stability:**

Store at 4 °C short term. Aliquot and store at -20 °C long term. Avoid freeze-thaw cycles.

**Specificity:**

Recognizes endogenous levels of LLH protein.

**DATA:**

Western blot analysis of LLH expression in U87MG (A), K562 (B), HeLa (C), A431 (D) whole cell lysates.

**Note:**

For research use only, not for use in diagnostic procedure.

**Bioworld Technology, Inc.**

Add: 1660 South Highway 100, Suite 500 St. Louis Park, MN 55416, USA.

Email: [info@bioworld.com](mailto:info@bioworld.com)

Tel: 6123263284

Fax: 6122933841

**Bioworld technology, co. Ltd.**

Add: No 9, weidi road Qixia District Nanjing, 210046, P. R. China.

Email: [info@biogol.com](mailto:info@biogol.com)

Tel: 0086-025-68037686

Fax: 0086-025-68035151