

VILIP-1 monoclonal antibody

Catalog: MB67049

Host: Mouse

Reactivity: Human

BackGround:

Visinin-like Protein 1, also called VILIP-1 and VSNL1, is a calcium-sensing protein in the central nervous system. Visinin-like Protein 1 exhibits a widespread distribution with high expression in the CNS, and lower expression levels in some peripheral tissues. Visinin-like Protein 1 responds to increased intracellular calcium concentration by translocating from the cytoplasm to membranes through calcium-dependent myristoylation at its N-terminus that allows interaction with membranes. This change in localization has been proposed to facilitate the activation of compartment-specific signal transduction for the selective activation of downstream signaling cascades. In Alzheimer's disease, Visinin-like Protein 1 expression is decreased in the brain, including a reduced number of Visinin-like Protein 1 immunoreactive neurons; however, the presence of the protein is increased in the CSF, suggesting that it is released from neurons during insults.

Product:

Mouse IgG1 kappa. Liquid in PBS, pH 7.3, 30% glycerol, and 0.01% sodium azide.

Molecular Weight:

~ 18 kDa

Swiss-Prot:

P62760

Purification&Purity:

This antibody is purified through a protein G column.

Applications:

WB (1/1000 - 1/2000)

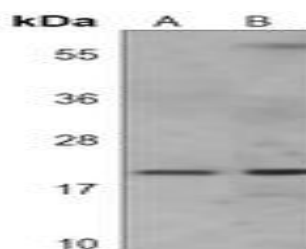
Storage&Stability:

Store at 4 °C short term. Aliquot and store at -20 °C long term. Avoid freeze-thaw cycles.

Specificity:

Recognizes endogenous levels of VILIP-1 protein.

DATA:



Western blot analysis of VILIP-1 expression in human brain (A), human cerebellum (B) whole cell lysates.

Note:

For research use only, not for use in diagnostic procedure.

Bioworld Technology, Inc.

Add: 1660 South Highway 100, Suite 500 St. Louis Park, MN 55416, USA.

Email: info@bioworld.com

Tel: 6123263284

Fax: 6122933841

Bioworld technology, co. Ltd.

Add: No 9, weidi road Qixia District Nanjing, 210046, P. R. China.

Email: info@biogot.com

Tel: 0086-025-68037686

Fax: 0086-025-68035151