

## RAB14 monoclonal antibody

Catalog: MB67041

Host: Mouse

Reactivity: Human

### BackGround:

Involved in membrane trafficking between the Golgi complex and endosomes during early embryonic development. Regulates the Golgi to endosome transport of FGFR-containing vesicles during early development, a key process for developing basement membrane and epiblast and primitive endoderm lineages during early post-implantation development. May act by modulating the kinesin KIF16B-cargo association to endosomes (By similarity).Regulates, together with its guanine nucleotide exchange factor DENND6A, the specific endocytic transport of ADAM10, N-cadherin/CDH2 shedding and cell-cell adhesion .

### Product:

Mouse IgG1 kappa. Liquid in PBS, pH 7.3, 30% glycerol, and 0.01% sodium azide.

### Molecular Weight:

~ 26 kDa

### Swiss-Prot:

P61106

### Purification&Purity:

This antibody is purified through a protein G column.

### Applications:

WB (1/500 - 1/1000)

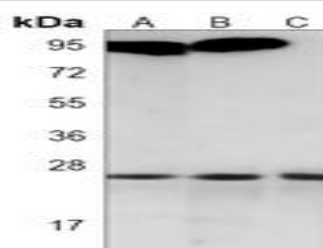
### Storage&Stability:

Store at 4 °C short term. Aliquot and store at -20 °C long term. Avoid freeze-thaw cycles.

### Specificity:

Recognizes endogenous levels of RAB14 protein.

### DATA:



Western blot analysis of RAB14 expression in HeLa (A), Raji (B), human brain (C) whole cell lysates.

### Note:

For research use only, not for use in diagnostic procedure.

### Bioworld Technology, Inc.

Add: 1660 South Highway 100, Suite 500 St. Louis Park, MN 55416, USA.

Email: [info@bioworld.com](mailto:info@bioworld.com)

Tel: 6123263284

Fax: 6122933841

### Bioworld technology, co. Ltd.

Add: No 9, weidi road Qixia District Nanjing, 210046, P. R. China.

Email: [info@biogol.com](mailto:info@biogol.com)

Tel: 0086-025-68037686

Fax: 0086-025-68035151