

Alpha-synuclein monoclonal antibody

Catalog: MB66979

Host: Mouse

Reactivity: Human, Mouse

BackGround:

α -Synuclein is a protein of 140-amino acids expressed abundantly in the brain. α -Synuclein is also the main component of pathogenic Lewy bodies and Lewy neurites. Research studies have shown that mutations of the α -Synuclein gene are linked to Parkinson's disease.

Product:

Mouse IgG1 kappa. Liquid in PBS, pH 7.3, 30% glycerol, and 0.01% sodium azide.

Molecular Weight:

~ 18 kDa

Swiss-Prot:

P37840

Purification&Purity:

This antibody is purified through a protein G column.

Applications:

WB (1/500 - 1/1000)

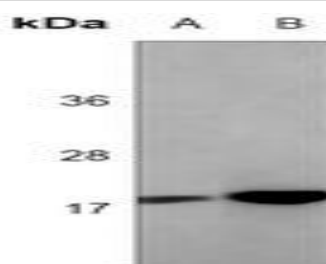
Storage&Stability:

Store at 4 °C short term. Aliquot and store at -20 °C long

term. Avoid freeze-thaw cycles.

Specificity:

Recognizes endogenous levels of Alpha-synuclein protein.

DATA:

Western blot analysis of Alpha-synuclein expression in human brain (A), mouse brain (B) whole cell lysates.

Note:

For research use only, not for use in diagnostic procedure.

Bioworld Technology, Inc.

Add: 1660 South Highway 100, Suite 500 St. Louis Park, MN 55416, USA.

Email: info@bioworld.com

Tel: 6123263284

Fax: 6122933841

Bioworld technology, co. Ltd.

Add: No 9, weidi road Qixia District Nanjing, 210046, P. R. China.

Email: info@biogol.com

Tel: 0086-025-68037686

Fax: 0086-025-68035151