

CD15 monoclonal antibody

Catalog: MB66930

Host: Mouse

Reactivity: Human

BackGround:

SSEA1 antibody detects a lactoseries oligosaccharide antigen that is expressed on the surface of mouse embryonal carcinoma and embryonic stem cells. This antigen is also found on early mouse embryos and both mouse and human germ cells, but is absent on human embryonic stem and carcinoma cells. Expression of SSEA1 in these human cell types increases upon differentiation, while on the mouse cell types differentiation leads to decreased expression.

Product:

Mouse IgM. Liquid in PBS, pH 7.3, 30% glycerol, and 0.01% sodium azide.

Molecular Weight:

~ 110 kDa

Swiss-Prot:

P22083

Purification&Purity:

This antibody is purified through a protein G column.

Applications:

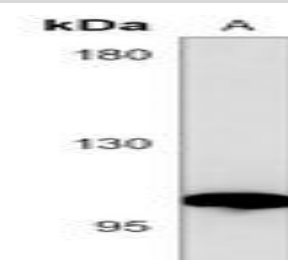
WB (1/500 - 1/1000)

Storage&Stability:

Store at 4 °C short term. Aliquot and store at -20 °C long term. Avoid freeze-thaw cycles.

Specificity:

Recognizes endogenous levels of CD15 protein.

DATA:

Western blot analysis of CD15 expression in ZR751 (A) whole cell lysates.

Note:

For research use only, not for use in diagnostic procedure.

Bioworld Technology, Inc.

Add: 1660 South Highway 100, Suite 500 St. Louis Park, MN 55416, USA.

Email: info@bioworld.com

Tel: 6123263284

Fax: 6122933841

Bioworld technology, co. Ltd.

Add: No 9, weidi road Qixia District Nanjing, 210046, P. R. China.

Email: info@biogol.com

Tel: 0086-025-68037686

Fax: 0086-025-68035151