

MTHFD2 monoclonal antibody

Catalog: MB66881

Host: Mouse

Reactivity: Human, Mouse

BackGround:

MTHFD2 is a bifunctional methylenetetrahydrofolate dehydrogenase/cyclohydrolase involved in mitochondrial folate metabolism. MTHFD2 expression is developmentally regulated, as it is expressed in embryos but not in most adult tissues. Recent research studies have shown that MTHFD2 is consistently overexpressed in many cancer types and correlated with poor survival in breast cancer. Overexpression of MTHFD2 promotes cell proliferation while its depletion induces cell death in human cancer cells.

Product:

Mouse IgG1 kappa. Liquid in PBS, pH 7.3, 30% glycerol, and 0.01% sodium azide.

Molecular Weight:

~ 40 kDa

Swiss-Prot:

P13995

Purification&Purity:

This antibody is purified through a protein G column.

Applications:

WB (1/1000 - 1/2000)

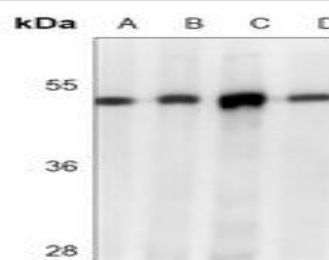
Storage&Stability:

Store at 4 °C short term. Aliquot and store at -20 °C long term. Avoid freeze-thaw cycles.

Specificity:

Recognizes endogenous levels of MTHFD2 protein.

DATA:



Western blot analysis of MTHFD2 expression in Hela (A), 293 (B), MOLT4 (C), mouse heart (D) whole cell lysates.

Note:

For research use only, not for use in diagnostic procedure.

Bioworld Technology, Inc.

Add: 1660 South Highway 100, Suite 500 St. Louis Park, MN 55416, USA.

Email: info@bioworld.com

Tel: 6123263284

Fax: 6122933841

Bioworld technology, co. Ltd.

Add: No 9, weidi road Qixia District Nanjing, 210046, P. R. China.

Email: info@biogol.com

Tel: 0086-025-68037686

Fax: 0086-025-68035151