

## ALDOC monoclonal antibody

Catalog: MB66856

Host: Mouse

Reactivity: Human, Mouse, Rat

### BackGround:

Aldolase (fructose biphosphate aldolase), a glycolytic enzyme, catalyzes the conversion of fructose 1, 6-bisphosphate to 3-phosphoglyceraldehyde. This ubiquitous enzyme is present as three different isozymes: aldolase A, aldolase B, and aldolase C. Research studies suggest that aldolase A expression potentially differentiates between nonneoplastic liver diseases and hepatocarcinoma. Furthermore, investigators have shown that changes in aldolase B gene expression levels have been observed in certain patients with this primary mor. Aldolase C is primarily expressed in the central nervous system. Studies have shown increased detection of serum aldolase C following traumatic brain injury (TBI) and mild TBI, showing potential for aldolase C as a biomarker for TBI.

### Product:

Mouse IgG3. Liquid in PBS, pH 7.3, 30% glycerol, and 0.01% sodium azide.

### Molecular Weight:

~ 41 kDa

### Swiss-Prot:

P09972

### Purification&Purity:

This antibody is purified through a protein G column.

### Applications:

WB (1/500 - 1/1000), FC (1/10 - 1/50)

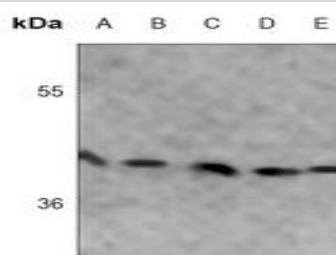
### Storage&Stability:

Store at 4 °C short term. Aliquot and store at -20 °C long term. Avoid freeze-thaw cycles.

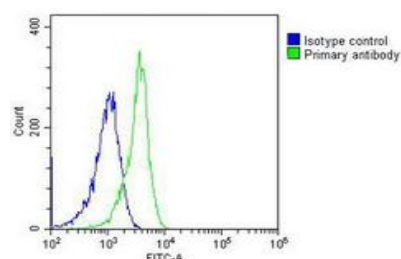
### Specificity:

Recognizes endogenous levels of ALDOC protein.

### DATA:



Western blot analysis of ALDOC expression in HL60 (A), 293T (B), mouse brain (C), rat brain (D), mouse spleen (E) whole cell lysates.



### Note:

For research use only, not for use in diagnostic procedure.

### Bioworld Technology, Inc.

Add: 1660 South Highway 100, Suite 500 St. Louis Park, MN 55416, USA.

Email: [info@bioworld.com](mailto:info@bioworld.com)

Tel: 6123263284

Fax: 6122933841

### Bioworld technology, co. Ltd.

Add: No 9, weidi road Qixia District Nanjing, 210046, P. R. China.

Email: [info@biogot.com](mailto:info@biogot.com)

Tel: 0086-025-68037686

Fax: 0086-025-68035151