

## ERCC1 monoclonal antibody

Catalog: MB66832

Host: Mouse

Reactivity: Human

### BackGround:

Xeroderma pigmentosum (XP) is an autosomal recessive disorder characterized by a genetic predisposition to sun-light-induced skin cancer; it is commonly due to deficiencies in DNA repair enzymes. The most frequent mutations are found in the XP genes from group A through G and group V, which encode for nucleotide excision repair proteins. XPF, which is also designated ERCC4 or ERCC11, associates directly with the excision repair cross-complementing 1 (ERCC1) factor. ERCC1, a functional homolog of Rad10 in *S. cerevisiae*, is a component of a structure-specific endonuclease that is responsible for 5' incisions during DNA repair. The ERCC1/XPF endonuclease preferentially cleaves one strand of DNA between duplex and single-stranded regions near borders of the stem-loop structure and, thereby, contributes to the initial steps of the nucleotide excision repair process.

### Product:

Mouse IgM kappa. Liquid in PBS, pH 7.3, 30% glycerol, and 0.01% sodium azide.

### Molecular Weight:

~ 38 kDa

### Swiss-Prot:

P07992

### Purification&Purity:

This antibody is purified through a protein G column.

### Applications:

WB (1/500 - 1/1000)

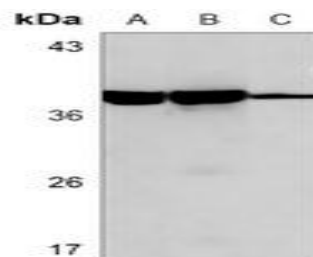
### Storage&Stability:

Store at 4 °C short term. Aliquot and store at -20 °C long term. Avoid freeze-thaw cycles.

### Specificity:

Recognizes endogenous levels of ERCC1 protein.

### DATA:



Western blot analysis of ERCC1 expression in A549 (A), HeLa (B), T47D (C) whole cell lysates.

### Note:

For research use only, not for use in diagnostic procedure.

### Bioworld Technology, Inc.

Add: 1660 South Highway 100, Suite 500 St. Louis Park, MN 55416, USA.

Email: [info@bioworld.com](mailto:info@bioworld.com)

Tel: 6123263284

Fax: 6122933841

### Bioworld technology, co. Ltd.

Add: No 9, weidi road Qixia District Nanjing, 210046, P. R. China.

Email: [info@biogol.com](mailto:info@biogol.com)

Tel: 0086-025-68037686

Fax: 0086-025-68035151