

c-Yes monoclonal antibody

Catalog: MB66829

Host: Mouse

Reactivity: Human

BackGround:

Src is the human homolog of the v-Src gene of the Rous sarcoma virus, also known as avian sarcoma virus or ASV. Src is the first proto-oncogenic nonreceptor tyrosine kinase characterized in human. By virtue of common structural motifs, the Src family is composed of nine members in vertebrates, including Src, Yes, Fgr, Frk, Fyn, Lyn, Hck, Lck and Blk. Src-family kinases transduce signals that control a variety of cellular processes, including proliferation, differentiation, motility and adhesion. Src-family kinases contain an amino terminal cell membrane anchor followed by an SH3 domain and an SH2 domain involved in modular association and activation, respectively. Human c-Yes is the cellular homolog of the Yamaguchi sarcoma virus oncogene, Yes1. The human c-Yes gene maps to chromosome 18p11.32 and encodes a 543 amino acid protein. c-Src and c-Yes kinases are more than 80% homologous outside of unique amino-termini. Their respective SH3 and SH2 domains are capable of directing specificity in substrate binding.

Product:

Mouse IgG1 kappa. Liquid in PBS, pH 7.3, 30% glycerol, and 0.01% sodium azide.

Molecular Weight:

~ 60 kDa

Swiss-Prot:

P07947

Purification&Purity:

This antibody is purified through a protein G column.

Applications:

WB (1/1000 - 1/2000)

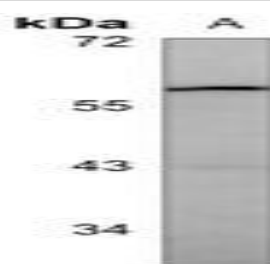
Storage&Stability:

Store at 4 °C short term. Aliquot and store at -20 °C long term. Avoid freeze-thaw cycles.

Specificity:

Recognizes endogenous levels of c-Yes protein.

DATA:



Western blot analysis of c-Yes expression in MCF7 (A) whole cell lysates.

Note:

For research use only, not for use in diagnostic procedure.

Bioworld Technology, Inc.

Add: 1660 South Highway 100, Suite 500 St. Louis Park, MN 55416, USA.

Email: info@bioworld.com

Tel: 6123263284

Fax: 6122933841

Bioworld technology, co. Ltd.

Add: No 9, weidi road Qixia District Nanjing, 210046, P. R. China.

Email: info@biogot.com

Tel: 0086-025-68037686

Fax: 0086-025-68035151