

## Beta5-tubulin monoclonal antibody

Catalog: MB66826

Host: Mouse

Reactivity: Human, Mouse, Rat

### BackGround:

Tubulin is a major cytoskeleton component that has five distinct forms, designated  $\alpha$ ,  $\beta$ ,  $\gamma$ ,  $\delta$  and  $\epsilon$  Tubulin.  $\alpha$  and  $\beta$  Tubulins form heterodimers which multimerize to form a microtubule filament. Multiple  $\beta$  Tubulin isoforms ( $\beta 1$ ,  $\beta 2$ ,  $\beta 3$ ,  $\beta 4$ ,  $\beta 5$ ,  $\beta 6$  and  $\beta 8$ ) have been characterized and are expressed in mammalian tissues.  $\beta 1$  and  $\beta 4$  are present throughout the cytosol,  $\beta 2$  is present in the nuclei and nucleoplasm, and  $\beta 3$  is a neuron-specific cytoskeletal protein.  $\gamma$  Tubulin forms the gammasome, which is required for nucleating microtubule filaments at the centrosome. Both  $\delta$  Tubulin and  $\epsilon$  Tubulin are associated with the centrosome.  $\delta$  Tubulin is a homolog of the Chlamydomonas  $\delta$  Tubulin Uni3 and is found in association with the centrioles, whereas  $\epsilon$  Tubulin localizes to the pericentriolar material.  $\epsilon$  Tubulin exhibits a cell-cycle-specific pattern of localization, first associating with only the older of the centrosomes in a newly duplicated pair and later associating with both centrosomes.

### Product:

Mouse IgG2b. Liquid in PBS, pH 7.3, 30% glycerol, and 0.01% sodium azide.

### Molecular Weight:

~ 55 kDa

### Swiss-Prot:

P07437

### Purification&Purity:

This antibody is purified through a protein G column.

### Applications:

WB (1/500 - 1/1000), IHC (1/50 - 1/200), IF/ICC (1/10 - 1/50)

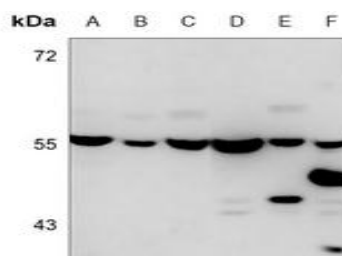
### Storage&Stability:

Store at 4 °C short term. Aliquot and store at -20 °C long term. Avoid freeze-thaw cycles.

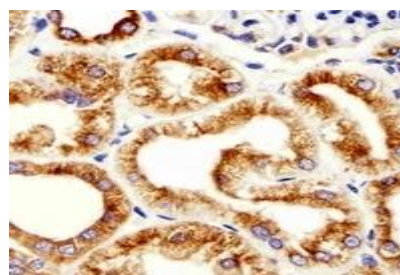
### Specificity:

Recognizes endogenous levels of Beta5-tubulin protein.

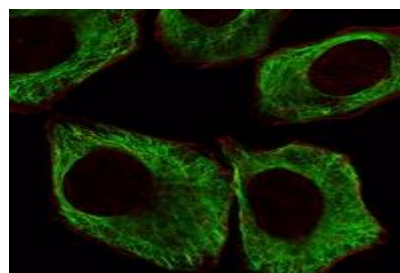
### DATA:



Western blot analysis of Beta5-tubulin expression in 293 (A), CEM (B), Hela (C), Y79 (D), PC12 (E) whole cell lysates.



Immunohistochemical analysis of Beta5-tubulin staining in human kidney formalin fixed paraffin embedded tissue section. The section was pre-treated using heat mediated antigen retrieval with sodium citrate buffer (pH 6.0). The section was then incubated with the antibody at room temperature and detected using an HRP conjugated compact polymer system. DAB was used as the chromogen. The section was then counterstained with haematoxylin and mounted with DPX.



Immunofluorescent analysis of Beta5-tubulin staining in A549 cells. Formalin-fixed cells were permeabilized with 0.1% Triton X-100 in TBS for 5-10 minutes and blocked with 3% BSA-PBS for 30 minutes at room temperature. Cells were probed with the primary antibody in 3% BSA-PBS and incubated overnight at 4 °C in a humidified chamber.

### Bioworld Technology, Inc.

Add: 1660 South Highway 100, Suite 500 St. Louis Park, MN 55416, USA.

Email: [info@bioworld.com](mailto:info@bioworld.com)

Tel: 6123263284

Fax: 6122933841

### Bioworld technology, co. Ltd.

Add: No 9, weidi road Qixia District Nanjing, 210046, P. R. China.

Email: [info@biogot.com](mailto:info@biogot.com)

Tel: 0086-025-68037686

Fax: 0086-025-68035151



## PRODUCT DATA SHEET

Bioworld Technology, Inc.

Cells were washed with PBST and incubated with a AF488-conjugated secondary antibody (green) in PBS at room temperature in the dark.

Phalloidin - AF555 was used to stain the cytoplasm (red). DAPI was

used to stain the cell nuclei (blue).

### Note:

For research use only, not for use in diagnostic procedure.

---

### Bioworld Technology, Inc.

Add: 1660 South Highway 100, Suite 500 St. Louis Park,  
MN 55416, USA.

Email: [info@bioworld.com](mailto:info@bioworld.com)

Tel: 6123263284

Fax: 6122933841

### Bioworld technology, co. Ltd.

Add: No 9, weidi road Qixia District Nanjing, 210046,  
P. R. China.

Email: [info@biogot.com](mailto:info@biogot.com)

Tel: 0086-025-68037686

Fax: 0086-025-68035151