

## ALPP monoclonal antibody

Catalog: MB66806

Host: Mouse

Reactivity: Human

### BackGround:

Alkaline Phosphatases (AP) are glycosyl-phosphatidylinositol (GPI)-anchored, dimeric, Zn<sup>2+</sup>-metallated glycoproteins that catalyze the hydrolysis of phosphomonoesters into an inorganic phosphate and an alcohol. Placental Alkaline Phosphatase (also known as PLAP, ALPP, PALP, placental ALP-1 or regan isozyme) is a 530 amino acid, tissue-specific AP that is expressed in the placenta, the serum of pregnant women and ectopically expressed in various cancers, including those of the ovary and testis. PLAP may assist in guiding migratory cells and transporting specific molecules, such as fatty acids and immunoglobulins, across the plasma membrane. The three tissue-specific APs identified in human, PLAP, germ cell AP (GCAP) and intestinal AP, are 90-98% homologous and their genes are clustered on chromosome 2q.

### Product:

Mouse IgG1. Liquid in PBS, pH 7.3, 30% glycerol, and 0.01% sodium azide.

### Molecular Weight:

~ 72 kDa

### Swiss-Prot:

P05187

### Purification&Purity:

This antibody is purified through a protein G column.

### Applications:

WB (1/500 - 1/1000)

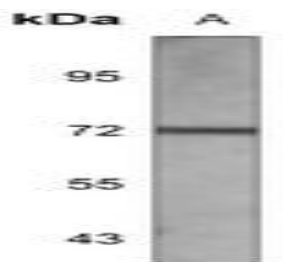
### Storage&Stability:

Store at 4 °C short term. Aliquot and store at -20 °C long term. Avoid freeze-thaw cycles.

### Specificity:

Recognizes endogenous levels of ALPP protein.

### DATA:



Western blot analysis of ALPP expression in HeLa (A) whole cell lysates.

### Note:

For research use only, not for use in diagnostic procedure.

### Bioworld Technology, Inc.

Add: 1660 South Highway 100, Suite 500 St. Louis Park, MN 55416, USA.

Email: [info@bioworld.com](mailto:info@bioworld.com)

Tel: 6123263284

Fax: 6122933841

### Bioworld technology, co. Ltd.

Add: No 9, weidi road Qixia District Nanjing, 210046, P. R. China.

Email: [info@biogol.com](mailto:info@biogol.com)

Tel: 0086-025-68037686

Fax: 0086-025-68035151