

## Cytochrome P450 1A1 monoclonal antibody

Catalog: MB66801

Host: Mouse

Reactivity: Human

### BackGround:

P450 enzymes constitute a family of monooxygenase enzymes that are involved in the metabolism of a wide array of endogenous and xenobiotic compounds. Several P450 enzymes have been classified by sequence similarities as members of the CYP1A and CYP2A subfamilies. NADPH cytochrome P450 reductase is a microsomal enzyme responsible for the transfer of electrons from NADPH to cytochrome P450 enzymes during the P450 catalytic cycle. NADPH cytochrome P450 reductase is localized to the endoplasmic reticulum where it is also able to transfer electrons to heme oxygenase and cytochrome b5. NADPH cytochrome P450 reductase is structurally related to two separate flavoprotein families, ferredoxin nucleotide reductase (FNR) and flavodoxin. Electron transfer of NADPH cytochrome P450 reductase requires the binding of two flavin cofactors, FAD and FMN, to the FNR and flavodoxin domains, respectively.

### Product:

Mouse IgG1. Liquid in PBS, pH 7.3, 30% glycerol, and 0.01% sodium azide.

### Molecular Weight:

~ 61 kDa

### Swiss-Prot:

P04798

### Purification&Purity:

This antibody is purified through a protein G column.

### Applications:

WB (1/500 - 1/1000)

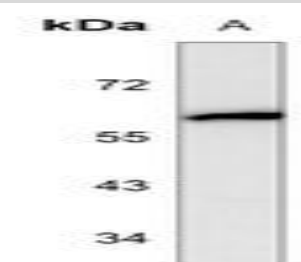
### Storage&Stability:

Store at 4 °C short term. Aliquot and store at -20 °C long term. Avoid freeze-thaw cycles.

### Specificity:

Recognizes endogenous levels of Cytochrome P450 1A1 protein.

### DATA:



Western blot analysis of Cytochrome P450 1A1 expression in Jurkat (A) whole cell lysates.

### Note:

For research use only, not for use in diagnostic procedure.

### Bioworld Technology, Inc.

Add: 1660 South Highway 100, Suite 500 St. Louis Park, MN 55416, USA.

Email: [info@bioworld.com](mailto:info@bioworld.com)

Tel: 6123263284

Fax: 6122933841

### Bioworld technology, co. Ltd.

Add: No 9, weidi road Qixia District Nanjing, 210046, P. R. China.

Email: [info@biogot.com](mailto:info@biogot.com)

Tel: 0086-025-68037686

Fax: 0086-025-68035151