

## C-Reactive Protein monoclonal antibody

Catalog: MB66779

Host: Mouse

Reactivity: Human

### BackGround:

Pentraxins, which include C-reactive protein (CRP) and serum amyloid P component (SAP), are prototypic acute phase proteins. CRP and SAP are produced by liver epithelial cells and are characterized by a cyclic pentameric structure and calcium-dependent ligand binding. IL-6 is the major inducer of human CRP gene, and IL-1 and steroids can enhance this induction. Testosterone is required for the expression of CRP transgene in vivo, whereas testosterone is not required for expression of the SAP gene. During the acute-phase response, cytokine C5a acts with IL-6 and/or IL-1 $\beta$  to promote upregulation of the CRP and SAP genes. Both Stat3 and C/EBP are involved in mouse SAP gene expression, but only Stat3 is involved in mouse CRP gene expression. SAP binds to a variety of molecules, including autoantigens and chromatin. Both CRP and SAP also bind to Fc g R and opsonize particles for phagocytosis by human polymorphonuclear leukocytes. Opsonization of zymosan by CRP is mediated through Fc g RI, while Fc g RII and Fc g RIII are receptors for SAP. Therefore, CRP and SAP play critical roles in the host defense system.

### Product:

Mouse IgG3. Liquid in PBS, pH 7.3, 30% glycerol, and 0.01% sodium azide.

### Molecular Weight:

~ 28 kDa

### Swiss-Prot:

P02741

### Purification&Purity:

This antibody is purified through a protein G column.

### Applications:

WB (1/500 - 1/1000)

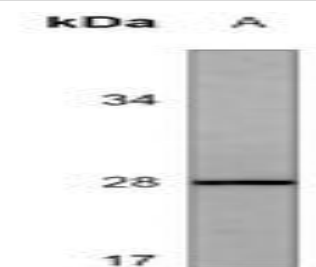
### Storage&Stability:

Store at 4 °C short term. Aliquot and store at -20 °C long term. Avoid freeze-thaw cycles.

### Specificity:

Recognizes endogenous levels of C-Reactive Protein protein.

### DATA:



Western blot analysis of C-Reactive Protein expression in NC1H460 (A) whole cell lysates.

### Note:

For research use only, not for use in diagnostic procedure.

### Bioworld Technology, Inc.

Add: 1660 South Highway 100, Suite 500 St. Louis Park, MN 55416, USA.

Email: [info@bioworld.com](mailto:info@bioworld.com)

Tel: 6123263284

Fax: 6122933841

### Bioworld technology, co. Ltd.

Add: No 9, weidi road Qixia District Nanjing, 210046, P. R. China.

Email: [info@biogot.com](mailto:info@biogot.com)

Tel: 0086-025-68037686

Fax: 0086-025-68035151