

PENK monoclonal antibody

Catalog: MB66762

Host: Mouse

Reactivity: Human

BackGround:

The corticotropin-lipotropin protein, also designated pro-opiomelanocortin, belongs to the POMC family of proteins. Specific cleavages by enzymes at certain basic paired residues yield various processed active peptides. The corticotropin-lipotropin protein contains synenkephalin, Leu-enkephalin, NPP, α -, β - and γ -melanotropin (MSH), adrenocorticotrophic hormone (ACTH), lipotropin β and γ , β -endorphin and Met-enkephalin processed active peptides. β -endorphin and Met-enkephalin are endogenous opiates while ACTH is crucial for adrenal gland stimulation to release cortisol. Met/Leu-enkephalins also function in pain perception and response to stress. MSH increased melanin production in melanocytes which leads to an increase in skin pigmentation. Leumorphin may be important in apoptosis prevention by being involved in the MAP-K and PI3-K pathways.

Product:

Mouse IgG1 kappa. Liquid in PBS, pH 7.3, 30% glycerol, and 0.01% sodium azide.

Molecular Weight:

~ 34 kDa

Swiss-Prot:

P01210

Purification&Purity:

This antibody is purified through a protein G column.

Applications:

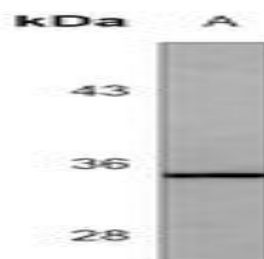
WB (1/500 - 1/1000)

Storage&Stability:

Store at 4 °C short term. Aliquot and store at -20 °C long term. Avoid freeze-thaw cycles.

Specificity:

Recognizes endogenous levels of PENK protein.

DATA:

Western blot analysis of PENK expression in T47D (A) whole cell lysates.

Note:

For research use only, not for use in diagnostic procedure.

Bioworld Technology, Inc.

Add: 1660 South Highway 100, Suite 500 St. Louis Park, MN 55416, USA.

Email: info@bioworld.com

Tel: 6123263284

Fax: 6122933841

Bioworld technology, co. Ltd.

Add: No 9, weidi road Qixia District Nanjing, 210046, P. R. China.

Email: info@biogot.com

Tel: 0086-025-68037686

Fax: 0086-025-68035151