

## Complement C3 monoclonal antibody

Catalog: MB66757

Host: Mouse

Reactivity: Human

### BackGround:

Complement C3 precursor contains complement C3  $\beta$  chain, complement C3  $\alpha$  chain, C3a anaphylatoxin, complement C3b  $\alpha$  chain, complement C3c fragment, complement C3dg fragment, complement C3g fragment, complement C3d fragment and complement C3f fragment. C3a, C4a and C5a are potent anaphylatoxins that are released during complement activation, a system of ligand-surface protein interactions specific to cells of hematopoietic lineage that aids in the elimination of pathogens. C3a and C5a secretion correlates with pathophysiological phenotypes such as asthma and bacterial meningitis. Binding of these proteins to their respective G protein-coupled receptors (C3aR, C5aR), which are present on the surface of myeloid leukocytes, induces proinflammatory events such as cellular degranulation, smooth muscle contraction, arachidonic acid metabolism, cytokine release, leukocyte activation and cellular chemotaxis. C3aR is expressed in brain and activated B lymphocytes, whereas C5aR is prevalent on the surface of hepatocyte, lung, smooth muscle and endothelial cells. Upon activation, C3aR and C5aR are susceptible to rapid GRK-mediated phosphorylation and Clathrin-coated vesicle targeting. C5aR utilizes the Ras-Raf-ERK1/2 cascade and couples to Gi/G16 proteins. C3 contains an  $\alpha$  and a  $\beta$  chain. The  $\alpha$  chain is converted to the  $\alpha'$ -chain upon C3 activation, and this is recognized by I3/15.

### Product:

Mouse IgG1. Supplied in crude ascites with 0.01% sodium azide.

### Molecular Weight:

~ 136 kDa

### Swiss-Prot:

P01024

### Purification&Purity:

### Applications:

WB (1/500 - 1/1000)

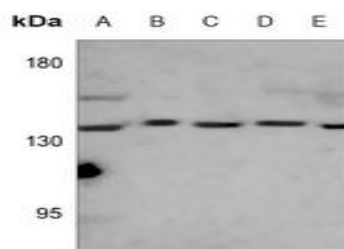
### Storage&Stability:

Store at 4 °C short term. Aliquot and store at -20 °C long term. Avoid freeze-thaw cycles.

### Specificity:

Recognizes endogenous levels of Complement C3 protein.

### DATA:



Western blot analysis of Complement C3 expression in Hela (A), HepG2 (B), K562 (C), CCRFCM (D), MDAMB453 (E) whole cell lysates.

### Note:

For research use only, not for use in diagnostic procedure.

### Bioworld Technology, Inc.

Add: 1660 South Highway 100, Suite 500 St. Louis Park, MN 55416, USA.

Email: [info@bioworld.com](mailto:info@bioworld.com)

Tel: 6123263284

Fax: 6122933841

### Bioworld technology, co. Ltd.

Add: No 9, weidi road Qixia District Nanjing, 210046, P. R. China.

Email: [info@biogol.com](mailto:info@biogol.com)

Tel: 0086-025-68037686

Fax: 0086-025-68035151