

## STC2 monoclonal antibody

Catalog: MB66740

Host: Mouse

Reactivity: Human

### BackGround:

Stanniocalcin 1 (STC1) and stanniocalcin 2 (STC2) are mammalian peptide hormones that were previously considered to be present only in bony fish, where they are involved in calcium homeostasis. STC1 plays a role in calcium and phosphate homeostasis and is phosphorylated in vitro by protein kinase C, and STC2 is phosphorylated in vitro by casein kinase II (CK2). A human fibrosarcoma cell line, HT-1080, expresses both STC1 and STC2 as secreted phosphoproteins in vivo, with STC2 being phosphorylated by an ecto-CK2-like enzyme. STC1 and STC2 have opposite effects on calcium and phosphate homeostasis, namely anti-hypercalcemic and anti-hypocalcemic actions, respectively. STC1 and STC2 are detected in human adrenal tumors, such as pheochromocytoma, differentiated neuroblastoma aldosterone-producing adenoma, and in cultured adrenal tumor cells (rat pheochromocytoma PC-12 cells and human neuroblastoma NB-1 cells).

### Product:

Mouse IgA kappa. Liquid in PBS, pH 7.3, 30% glycerol, and 0.01% sodium azide.

### Molecular Weight:

~ 29 kDa

### Swiss-Prot:

O76061

### Purification&Purity:

This antibody is purified through a protein G column.

### Applications:

WB (1/500 - 1/1000)

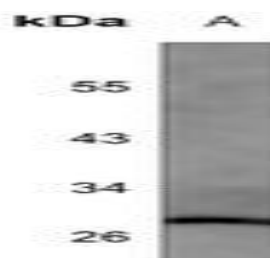
### Storage&Stability:

Store at 4 °C short term. Aliquot and store at -20 °C long term. Avoid freeze-thaw cycles.

### Specificity:

Recognizes endogenous levels of STC2 protein.

### DATA:



Western blot analysis of STC2 expression in HepG2 (A) whole cell lysates.

### Note:

For research use only, not for use in diagnostic procedure.

### Bioworld Technology, Inc.

Add: 1660 South Highway 100, Suite 500 St. Louis Park, MN 55416, USA.

Email: [info@bioworld.com](mailto:info@bioworld.com)

Tel: 6123263284

Fax: 6122933841

### Bioworld technology, co. Ltd.

Add: No 9, weidi road Qixia District Nanjing, 210046, P. R. China.

Email: [info@biogol.com](mailto:info@biogol.com)

Tel: 0086-025-68037686

Fax: 0086-025-68035151