

CBFA2T3 monoclonal antibody

Catalog: MB66735

Host: Mouse

Reactivity: Human

BackGround:

ETO and ETO-2, which are alternatively designated MTG8 and MTG16, respectively, are members of the ETO transcription factor family. These transcription factors are characterized by a zinc-finger domain and four conserved domains, of which domain II is required for dimerization between family members. ETO and ETO-2 may function to mediate interactions between DNA binding proteins and transcriptional regulators, such as N-CoR. Frequently, the t(8;21) translocation of ETO produces the AML-1/ETO oncoprotein, which consists of the first 177 amino acids of AML-1 and all but the first 30 amino acids of ETO. AML-1/ETO expression is observed in 12-15% of acute myelogenous, M2 subtype leukemias. The AML-1/ETO fusion proteins associate with multimeric N-CoR/mSin3/HDAC1 complexes, block differentiation and induce transcriptional repression by altering chromatin remodeling.

Product:

Mouse IgG1 kappa. Liquid in PBS, pH 7.3, 30% glycerol, and 0.01% sodium azide.

Molecular Weight:

~ 72 kDa

Swiss-Prot:

O75081

Purification&Purity:

This antibody is purified through a protein G column.

Applications:

WB (1/500 - 1/1000)

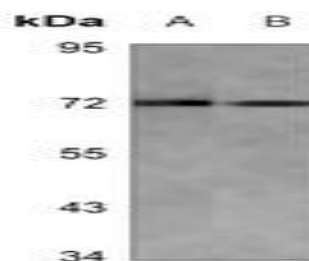
Storage&Stability:

Store at 4 °C short term. Aliquot and store at -20 °C long term. Avoid freeze-thaw cycles.

Specificity:

Recognizes endogenous levels of CBFA2T3 protein.

DATA:



Western blot analysis of CBFA2T3 expression in Jurkat (A), CCRFCM (B) whole cell lysates.

Note:

For research use only, not for use in diagnostic procedure.

Bioworld Technology, Inc.

Add: 1660 South Highway 100, Suite 500 St. Louis Park, MN 55416, USA.

Email: info@bioworld.com

Tel: 6123263284

Fax: 6122933841

Bioworld technology, co. Ltd.

Add: No 9, weidi road Qixia District Nanjing, 210046, P. R. China.

Email: info@biogot.com

Tel: 0086-025-68037686

Fax: 0086-025-68035151