

EEF1E1 monoclonal antibody

Catalog: MB66722

Host: Mouse

Reactivity: Human, Mouse

BackGround:

Positive modulator of ATM response to DNA damage.

Product:

Mouse IgG2b kappa. Liquid in PBS, pH 7.3, 30% glycerol, and 0.01% sodium azide.

Molecular Weight:

~ 17 kDa

Swiss-Prot:

O43324

Purification&Purity:

This antibody is purified through a protein G column.

Applications:

WB (1/500 - 1/2000), IF/ICC (1/10 - 1/50), FC (1/10 - 1/50)

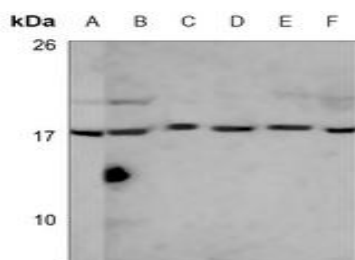
Storage&Stability:

Store at 4 °C short term. Aliquot and store at -20 °C long term. Avoid freeze-thaw cycles.

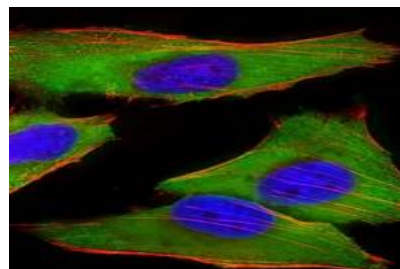
Specificity:

Recognizes endogenous levels of EEF1E1 protein.

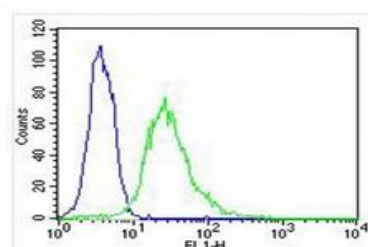
DATA:



Western blot analysis of EEF1E1 expression in HepG2 (A), human testis (B), A549 (C), A431 (D), Jurkat (E), mouse brain (F) whole cell lysates.



Immunofluorescent analysis of EEF1E1 staining in HeLa cells. Formalin-fixed cells were permeabilized with 0.1% Triton X-100 in TBS for 5-10 minutes and blocked with 3% BSA-PBS for 30 minutes at room temperature. Cells were probed with the primary antibody in 3% BSA-PBS and incubated overnight at 4 °C in a humidified chamber. Cells were washed with PBST and incubated with a AF488-conjugated secondary antibody (green) in PBS at room temperature in the dark. Phalloidin - AF555 was used to stain the cytoplasm (red). DAPI was used to stain the cell nuclei (blue).



Note:

For research use only, not for use in diagnostic procedure.

Bioworld Technology, Inc.

Add: 1660 South Highway 100, Suite 500 St. Louis Park, MN 55416, USA.

Email: info@bioworld.com

Tel: 6123263284

Fax: 6122933841

Bioworld technology, co. Ltd.

Add: No 9, weidi road Qixia District Nanjing, 210046, P. R. China.

Email: info@biogot.com

Tel: 0086-025-68037686

Fax: 0086-025-68035151