

## DCLK1 monoclonal antibody

Catalog: MB66717

Host: Mouse

Reactivity: Human, Mouse

### BackGround:

Doublecortin-like kinase 1 (DCLK1, DCAMKL1) is a serine/threonine kinase that belongs to the CaM kinase family and shares homology with the neuronal microtubule binding protein doublecortin. DCLK1 is thought to be involved in calcium signaling pathways controlling neuronal development in the embryonic brain. The kinase also functions in the mature nervous system and is highly expressed in regions of active neurogenesis in the neo-cortex and cerebellum. Research studies suggest that the DCLK1 kinase is highly expressed in subpopulations of cells within the colon and gastric epithelium and in the pancreas. The nature of these cell populations, whether normal, stem-like, or tumor-initiating, is unclear.

### Product:

Mouse IgG1 kappa. Liquid in PBS, pH 7.3, 30% glycerol, and 0.01% sodium azide.

### Molecular Weight:

~ 82 kDa

### Swiss-Prot:

O15075

### Purification&Purity:

This antibody is purified through a protein G column.

### Applications:

WB (1/1000 - 1/2000)

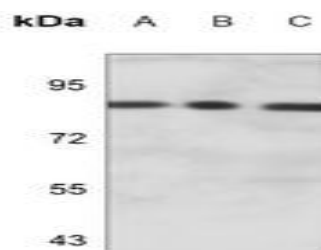
### Storage&Stability:

Store at 4 °C short term. Aliquot and store at -20 °C long term. Avoid freeze-thaw cycles.

### Specificity:

Recognizes endogenous levels of DCLK1 protein.

### DATA:



Western blot analysis of DCLK1 expression in human brain (A), mouse brain (B), TT (C) whole cell lysates.

### Note:

For research use only, not for use in diagnostic procedure.

### Bioworld Technology, Inc.

Add: 1660 South Highway 100, Suite 500 St. Louis Park, MN 55416, USA.

Email: [info@bioworld.com](mailto:info@bioworld.com)

Tel: 6123263284

Fax: 6122933841

### Bioworld technology, co. Ltd.

Add: No 9, weidi road Qixia District Nanjing, 210046, P. R. China.

Email: [info@biogol.com](mailto:info@biogol.com)

Tel: 0086-025-68037686

Fax: 0086-025-68035151